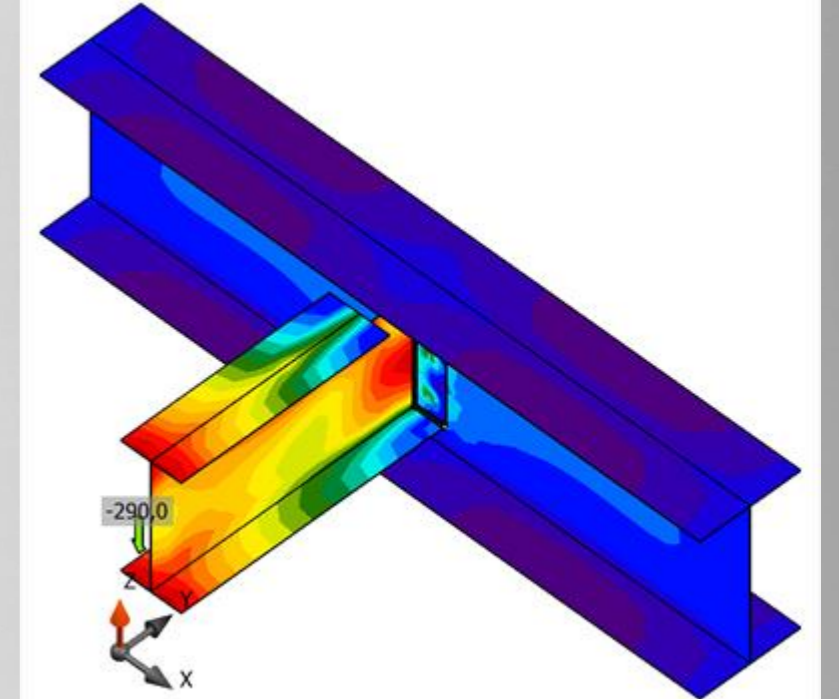
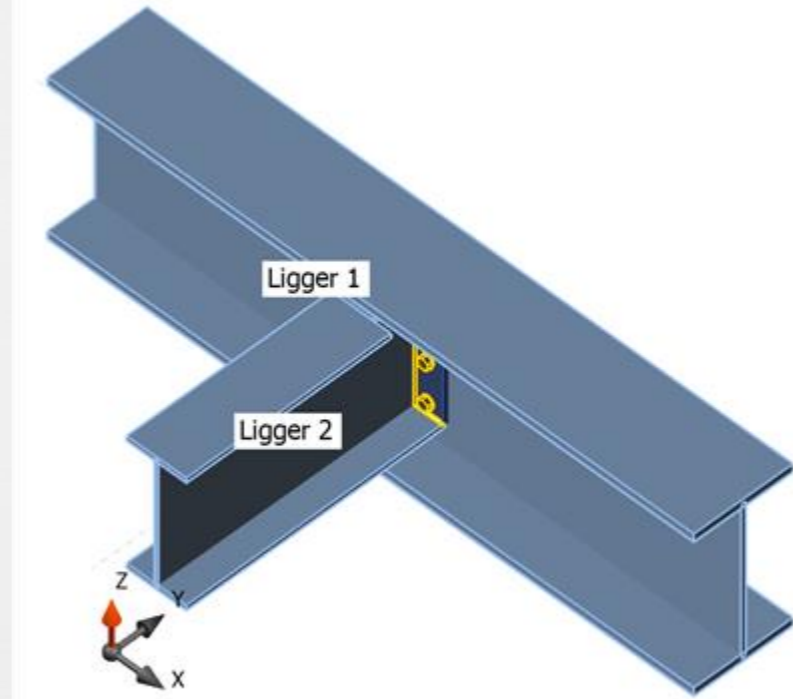
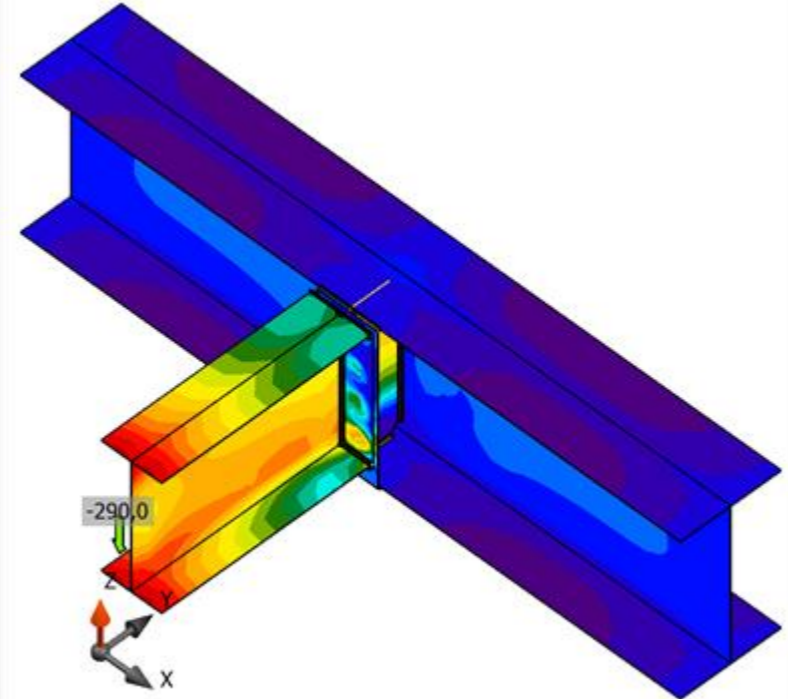
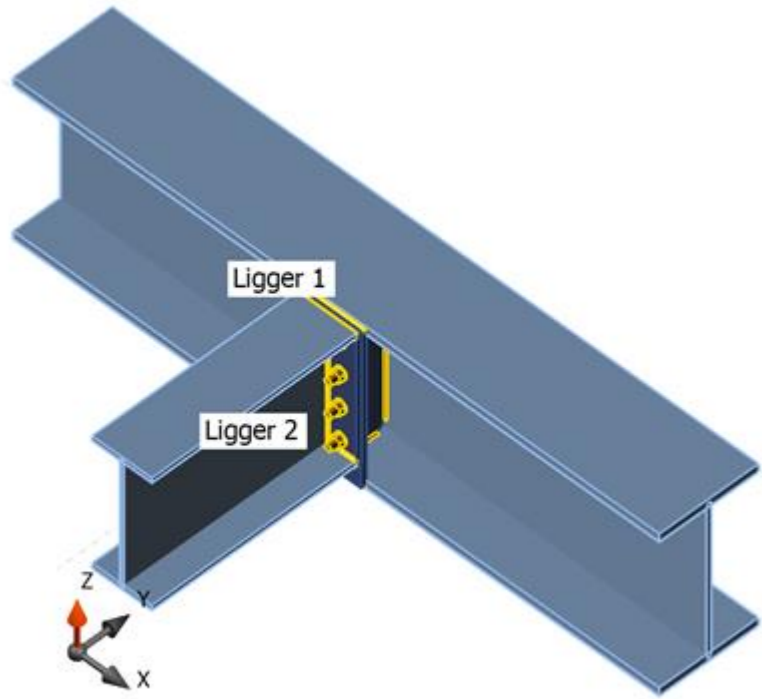
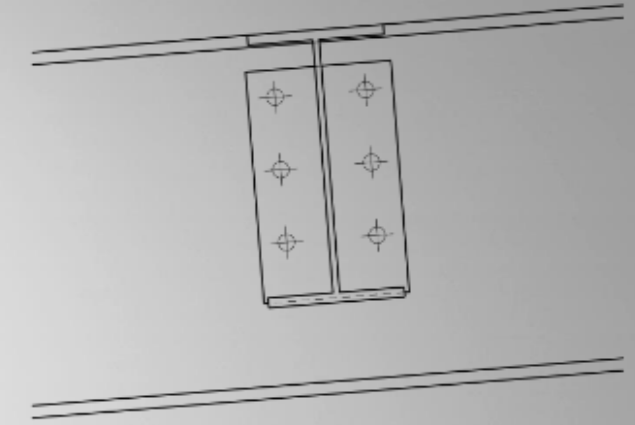
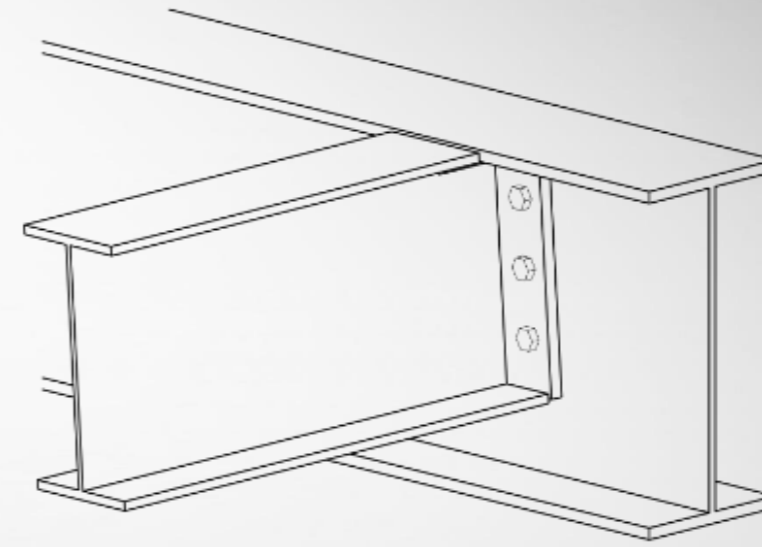
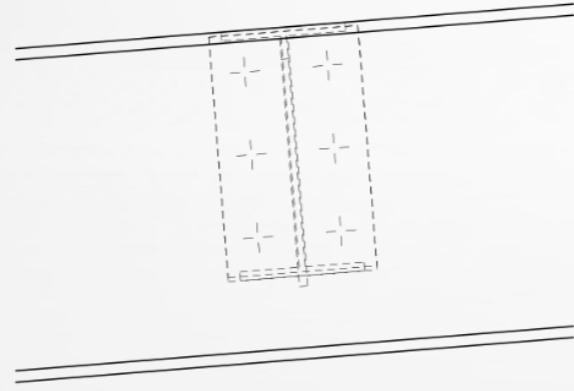
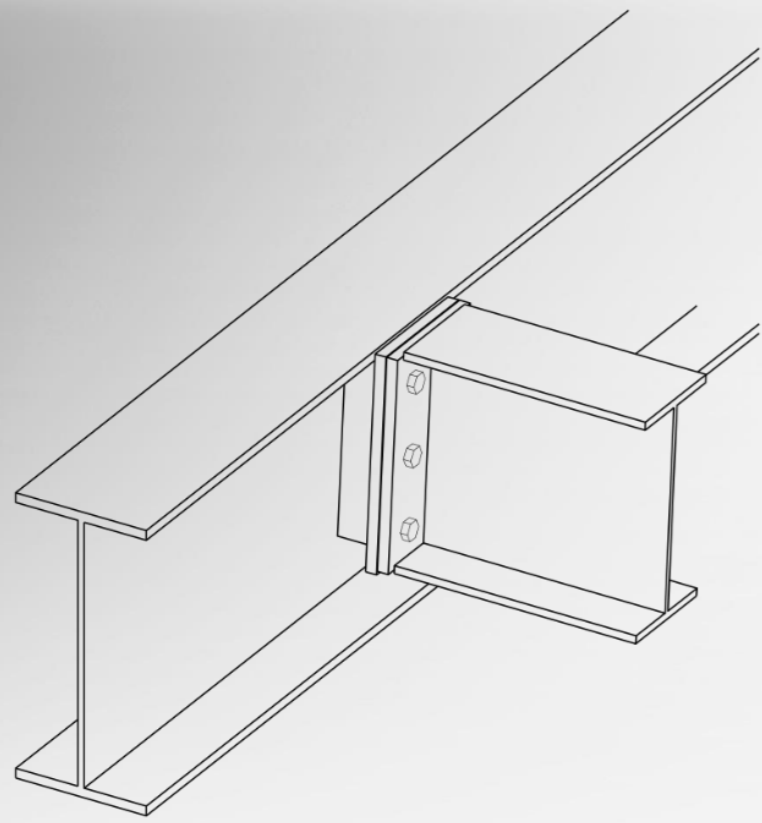


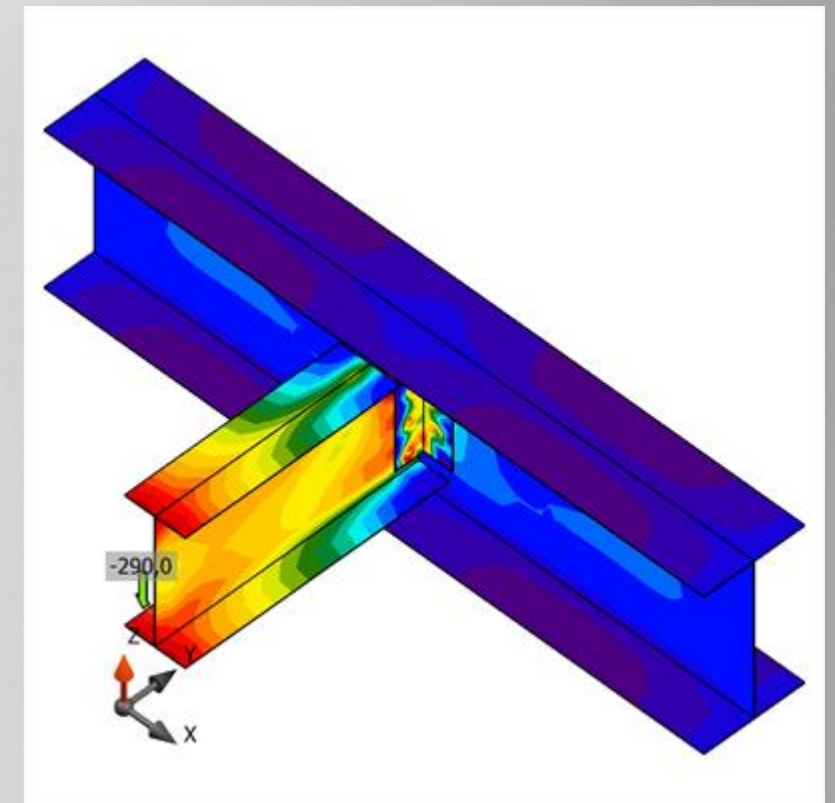
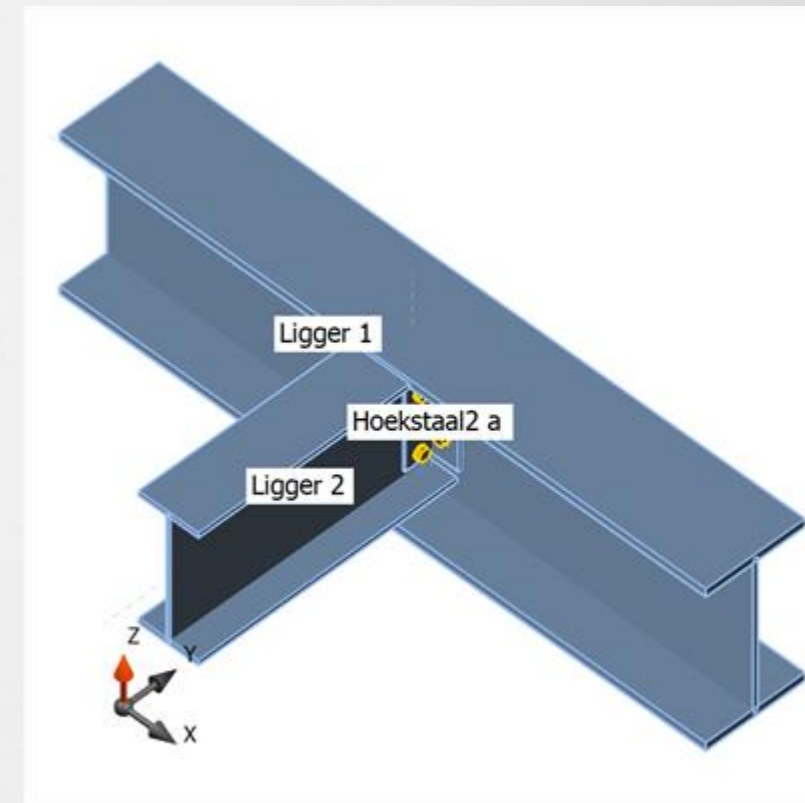
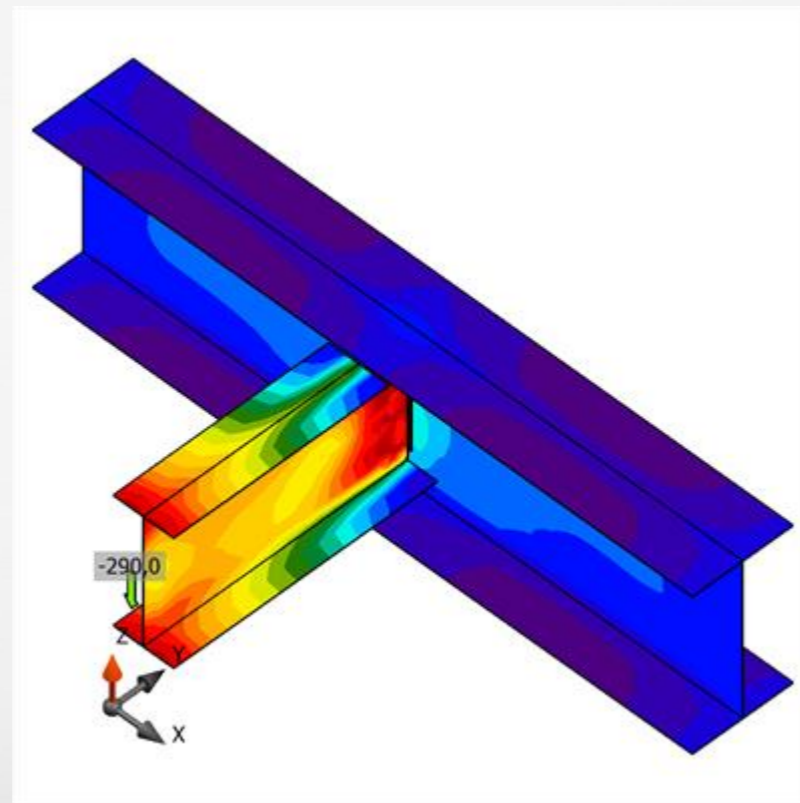
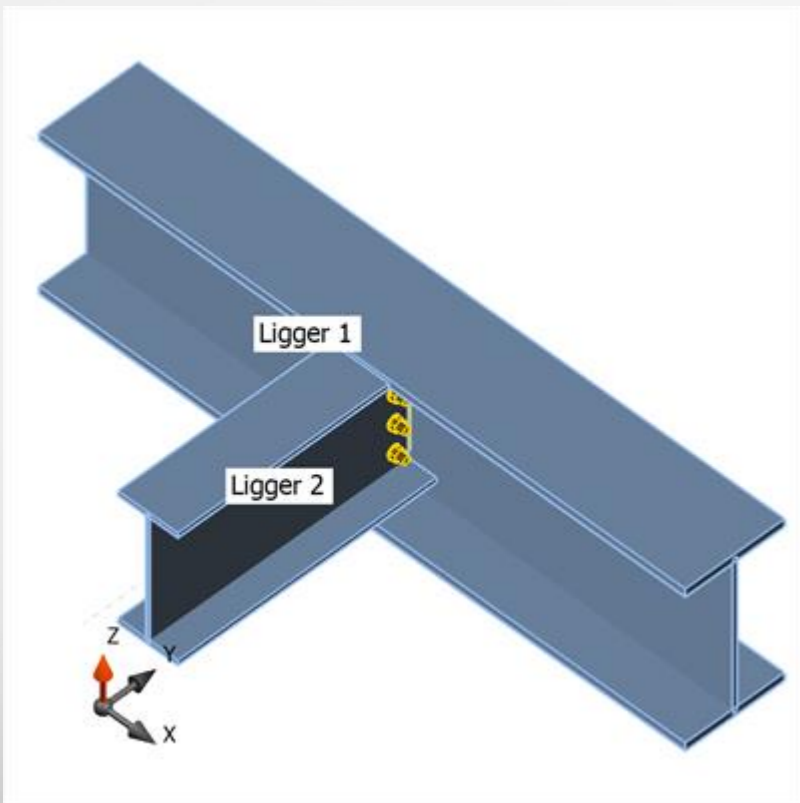
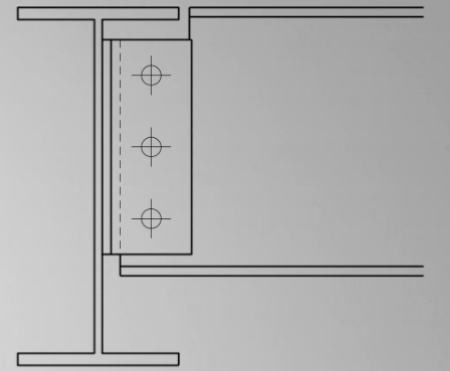
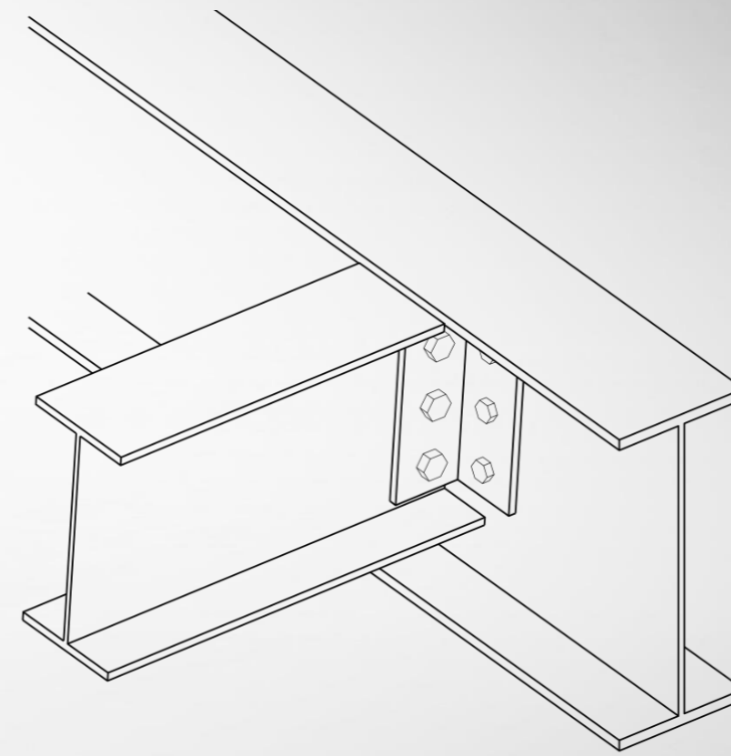
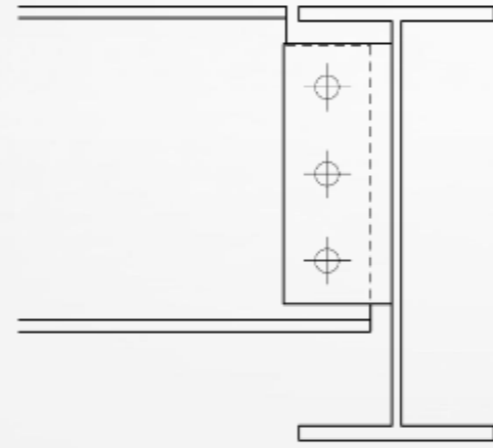
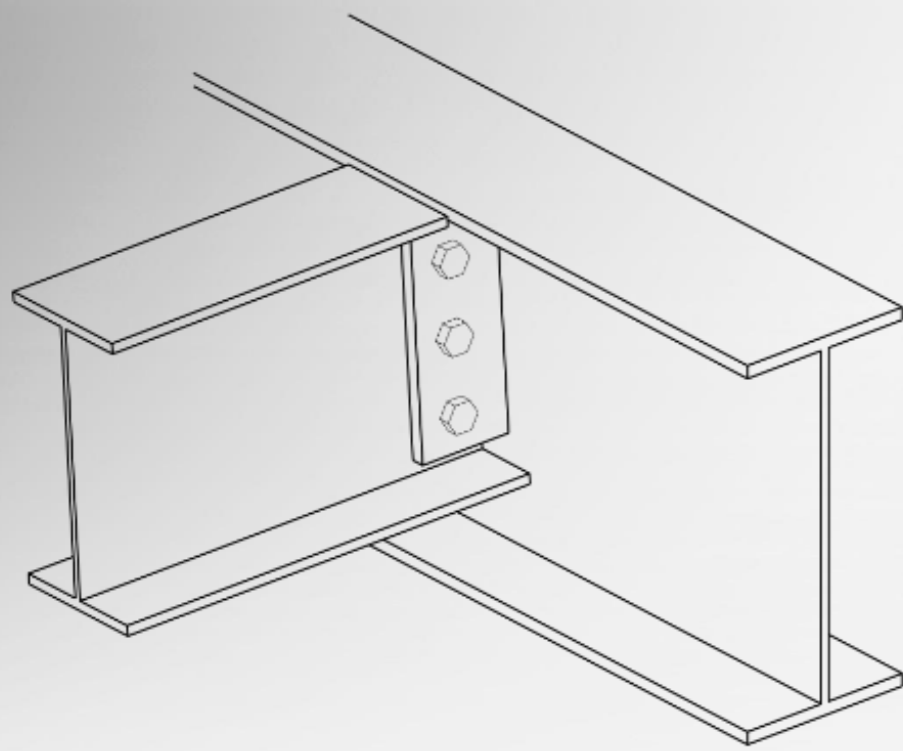


THE FABRICATOR | VAN ONTWERP TOT PRODUCTIE

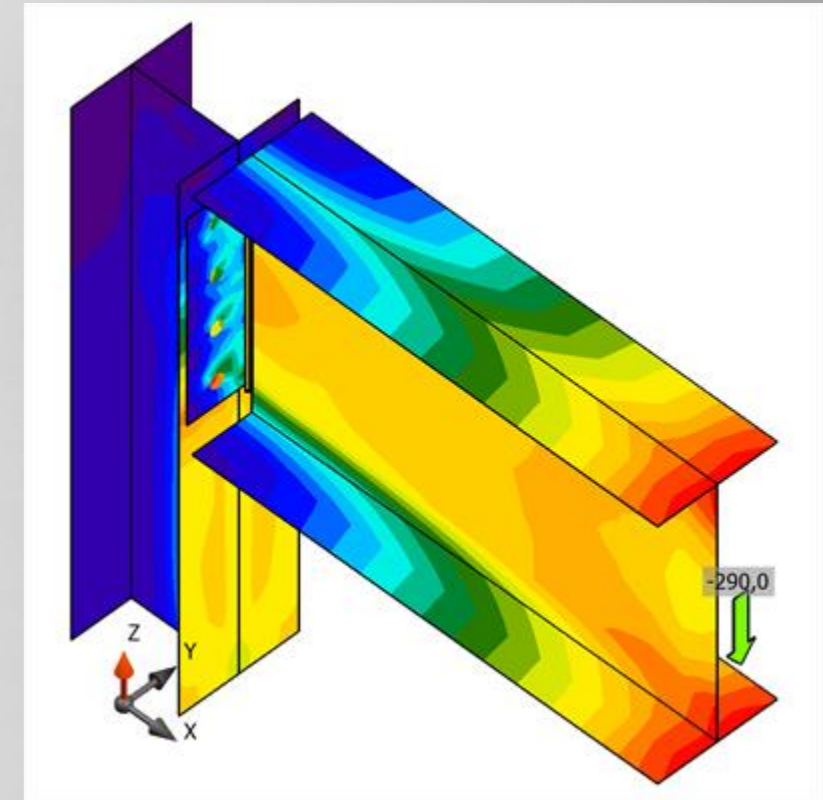
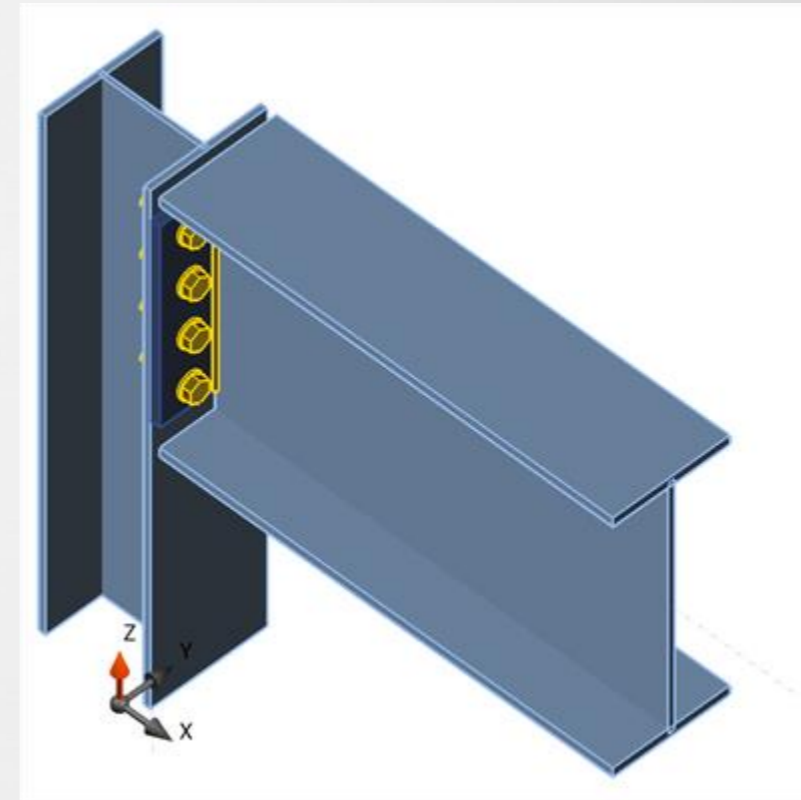
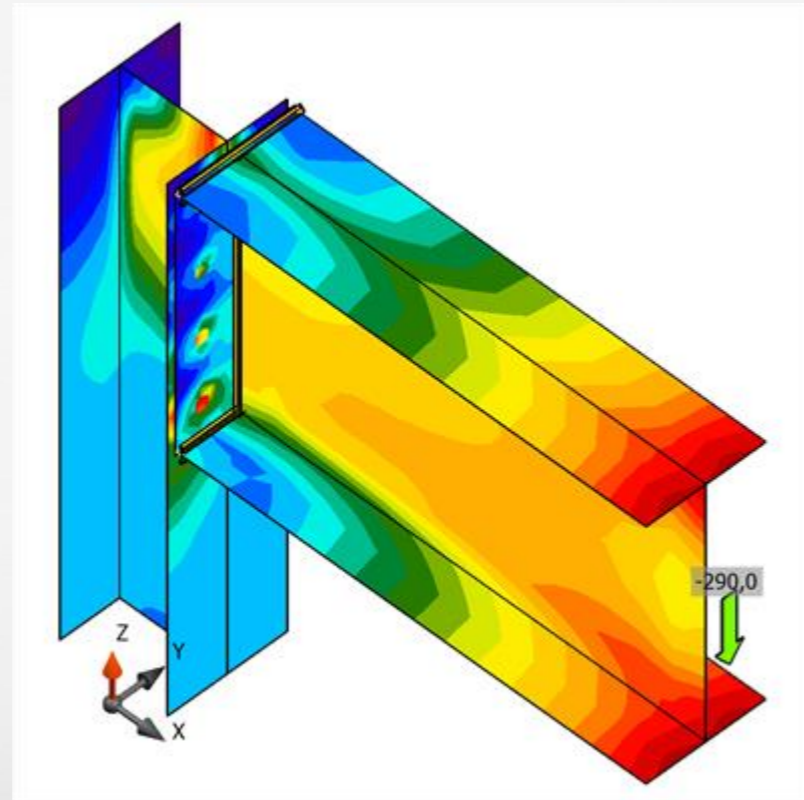
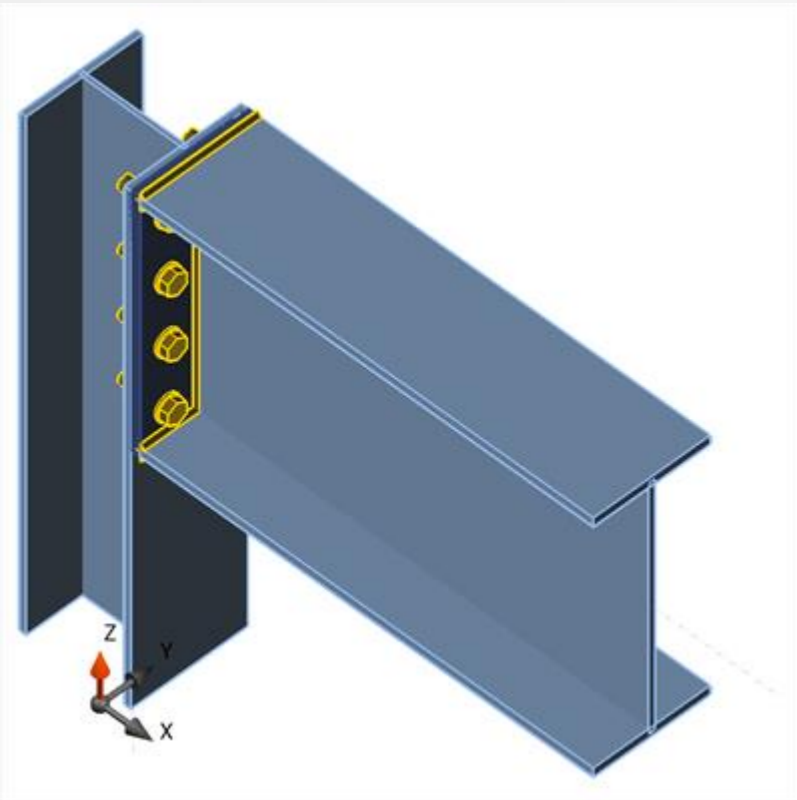
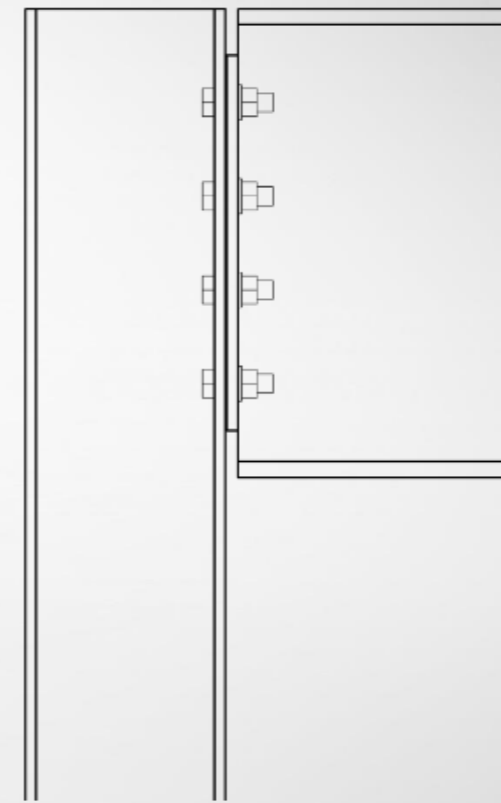
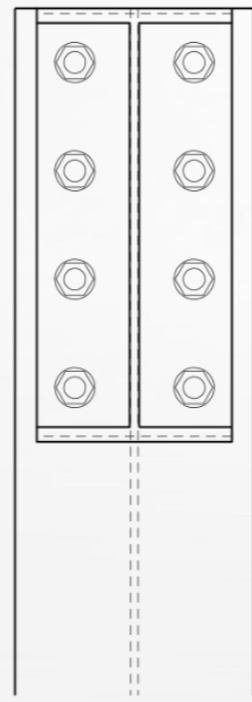
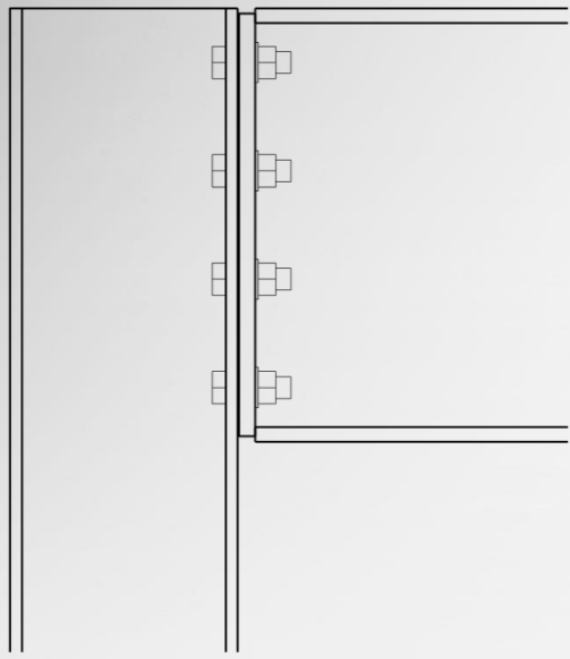
KOSTEN EN MAAKBAARHEID
THE FABRICATOR
VAN 3D CAD TOT FABRICATOR
BESCHIKBAARHEID



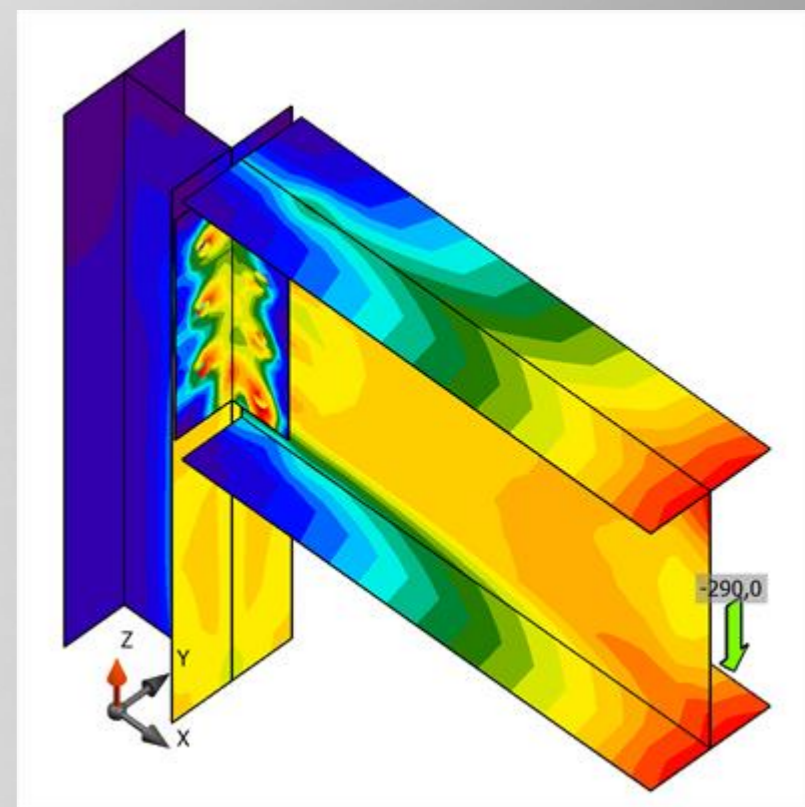
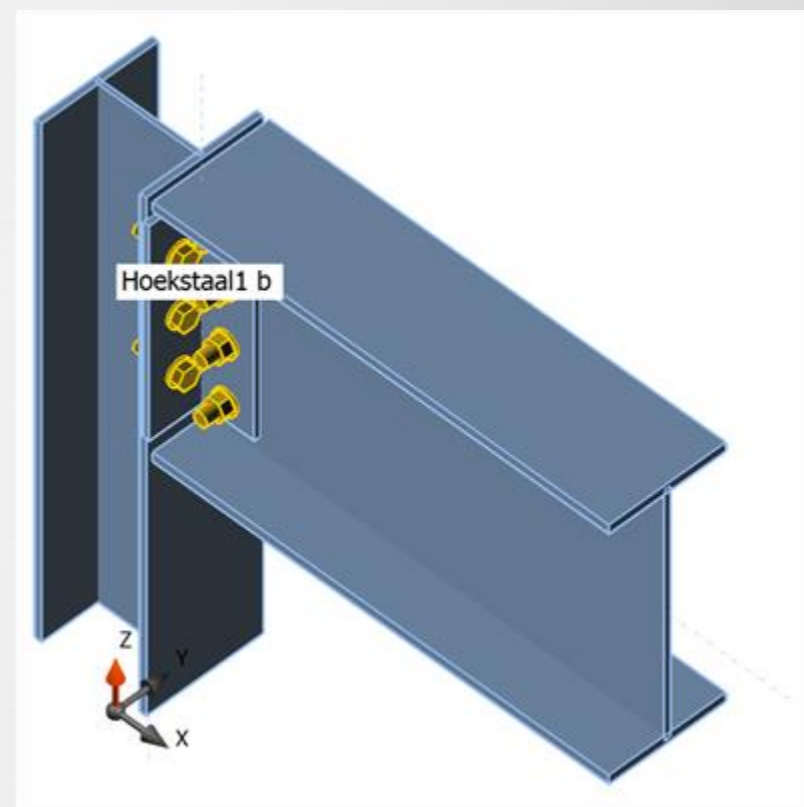
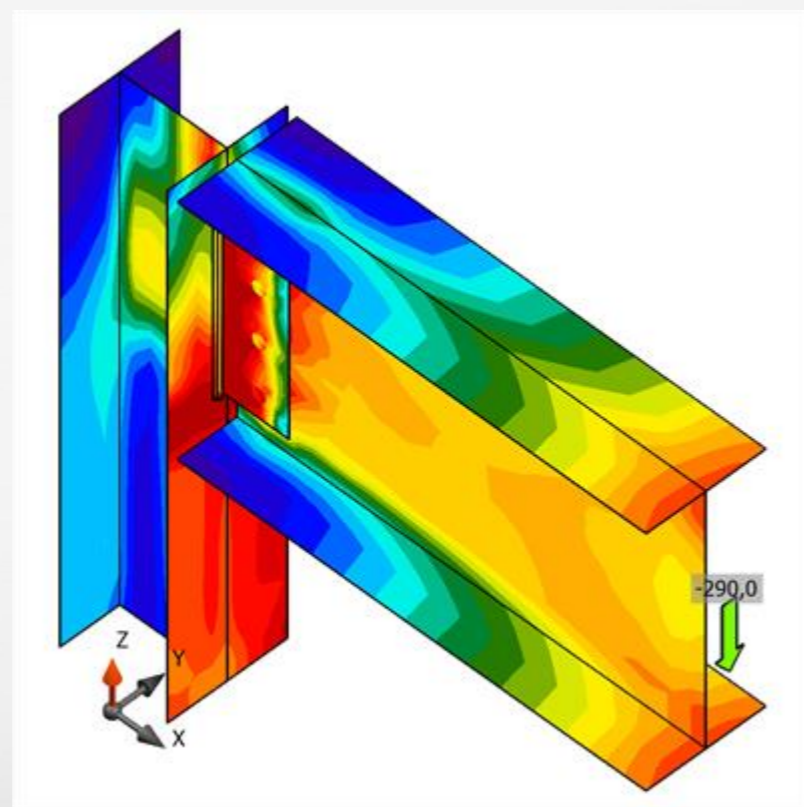
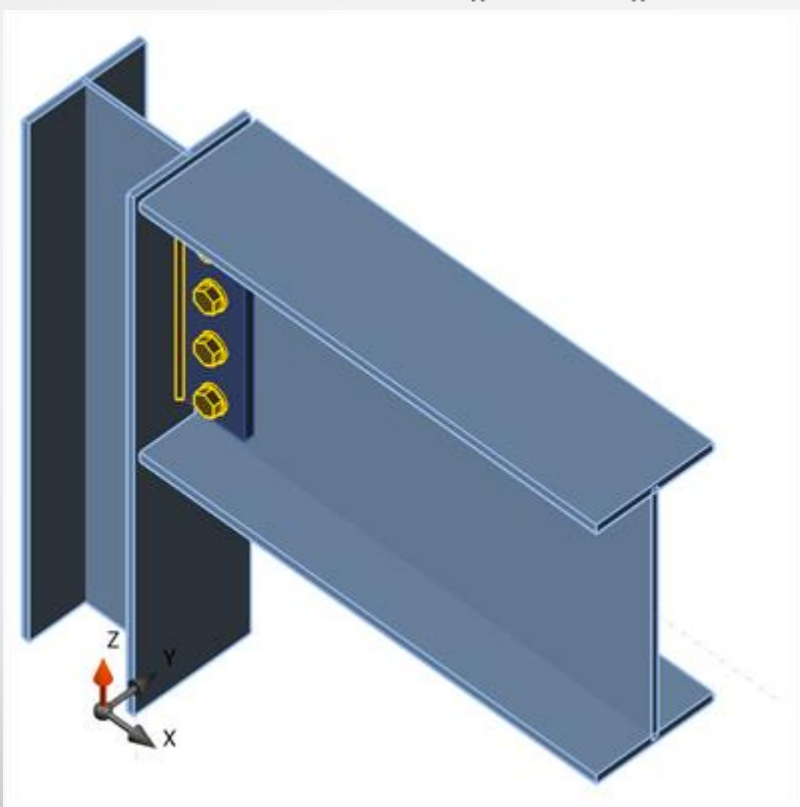
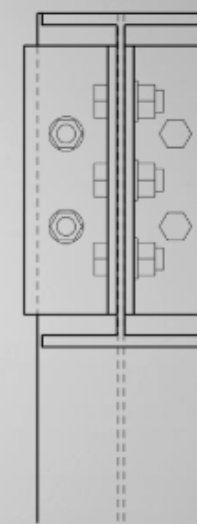
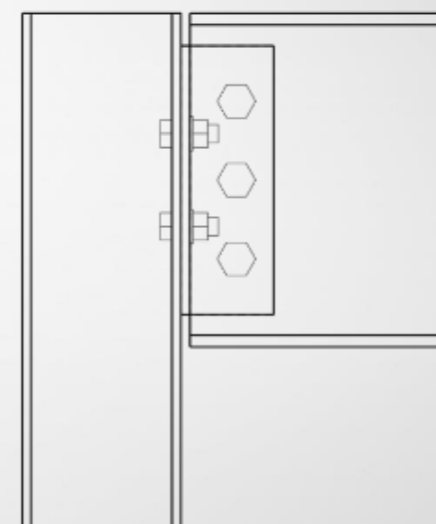
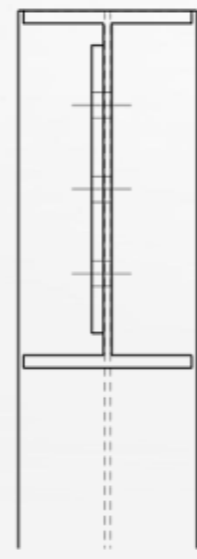
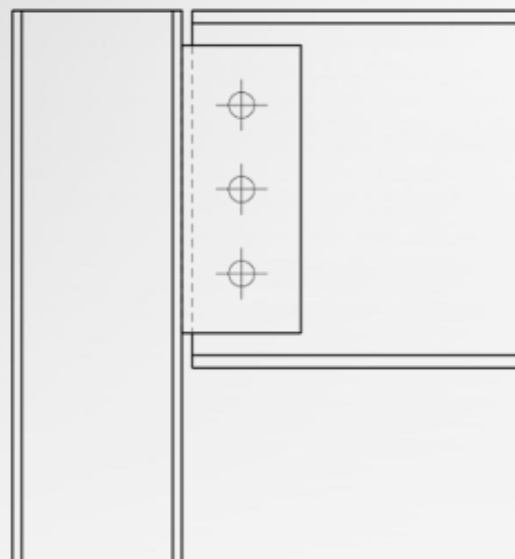
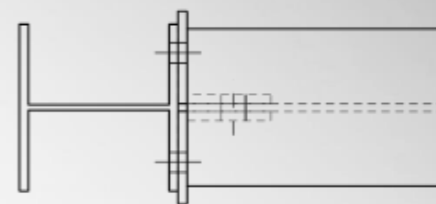
VOLLEDIGE KOPPLAAT / RAVELING



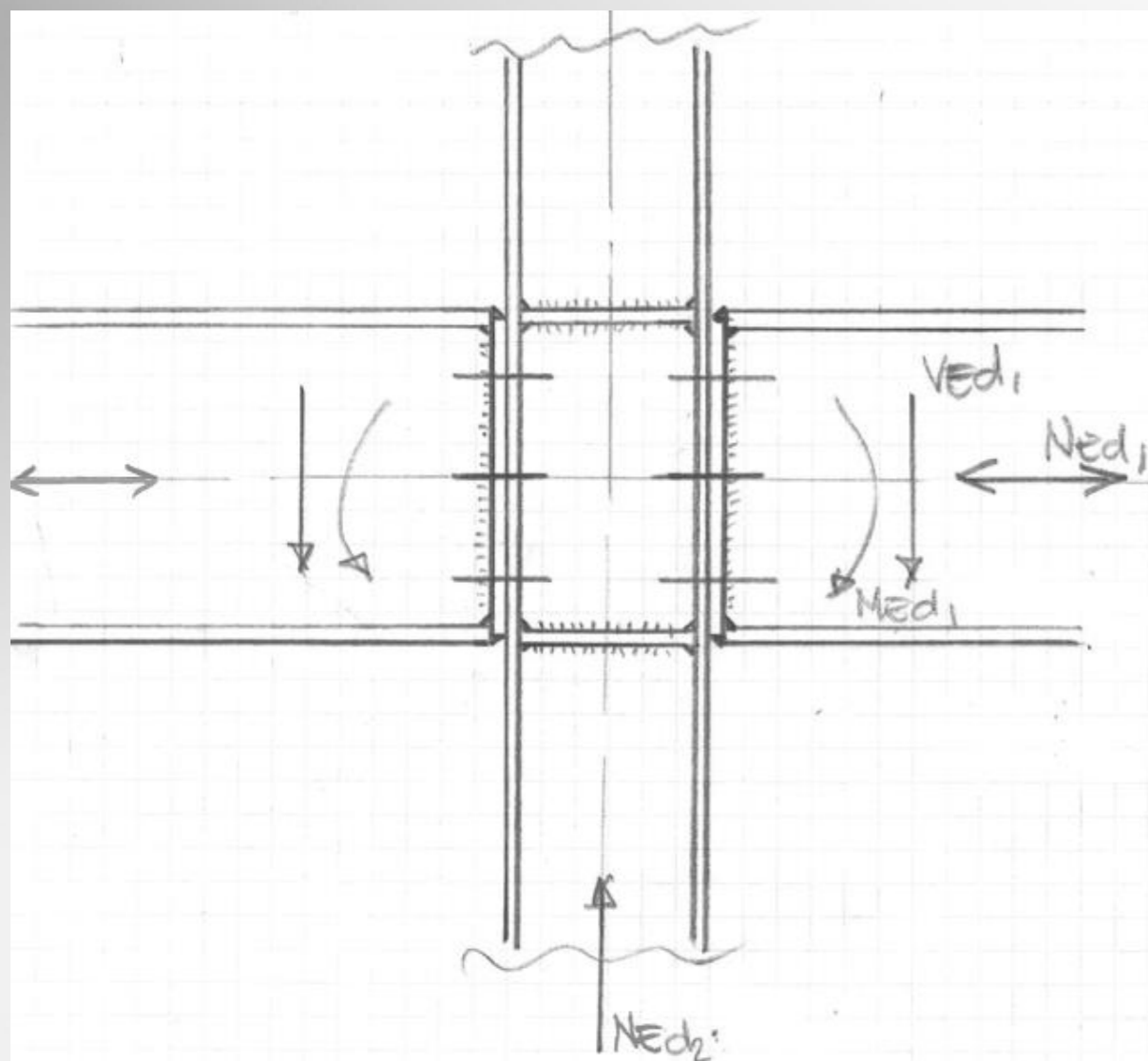
LIJFPLAAT / DUBBELE HOEKLIJN



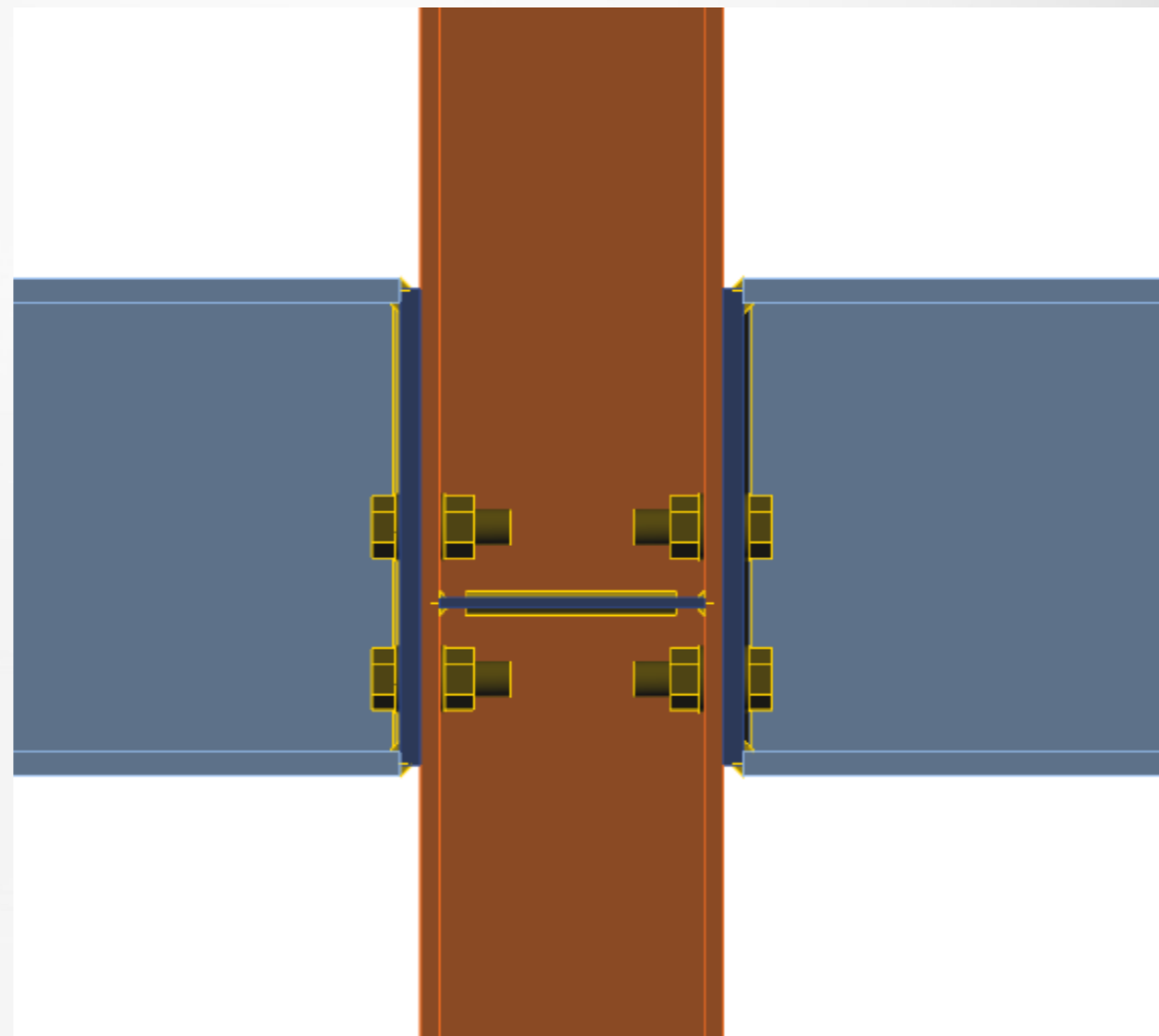
VOLLEDIGE KOPPLAAT / EINDPLAAT



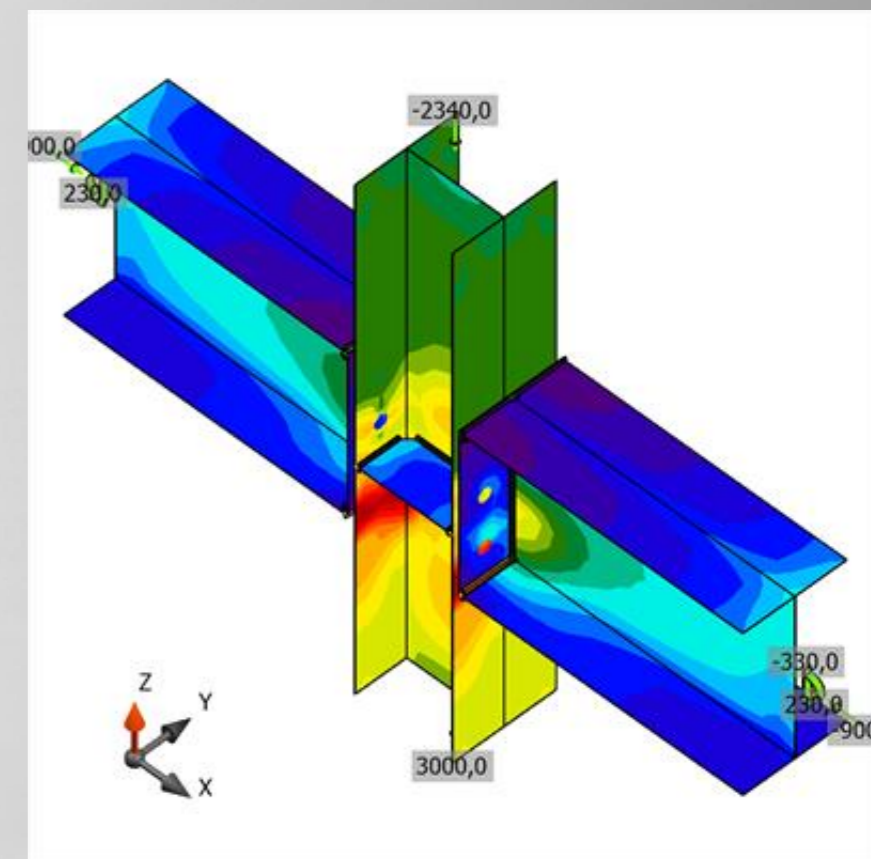
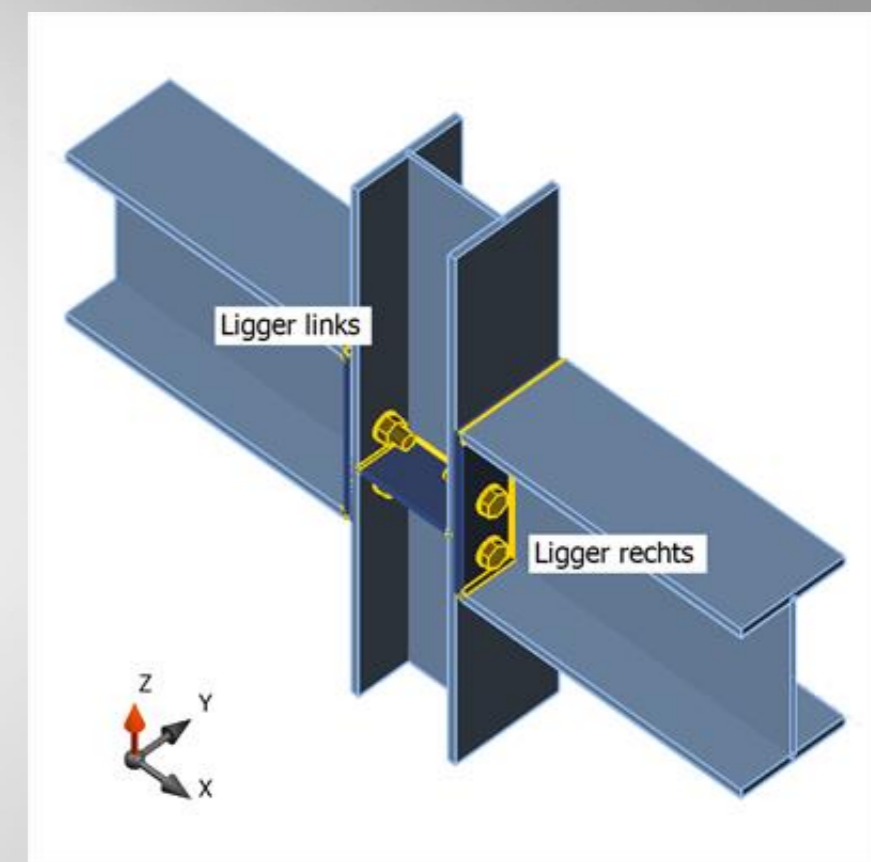
LIJFPLAAT / DUBBELE HOEKLIJN



**KOPPLATEN 25 MM / 4 SCHOTTEN 25 MM
 LASSEN KOPPLATEN AF 13 MM EN AW 8 MM
 LASSEN SCHOTTEN AF 13 MM EN AW 8 MM
 BOUTEN 2X 6M36**



**KOPPLATEN 20 MM / 2 SCHOTTEN 10 MM
 LASSEN KOPPLATEN AF 8 MM EN AW 5 MM
 LASSEN SCHOTTEN AF 5 MM EN AW 5 MM
 BOUTEN 2X 4M36**



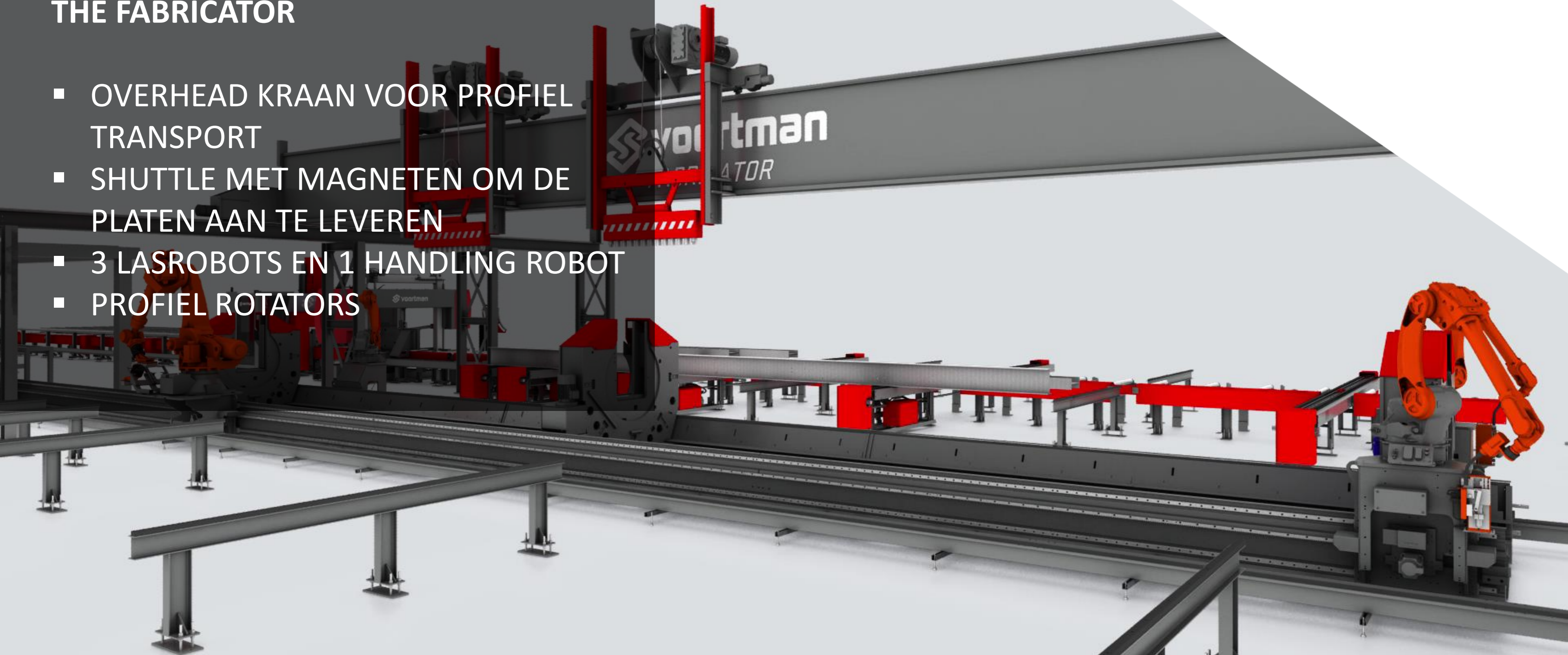
VOORBEELD DETAIL



KOSTEN EN MAAKBAARHEID
THE FABRICATOR
VAN 3D CAD TOT FABRICATOR
BESCHIKBAARHEID

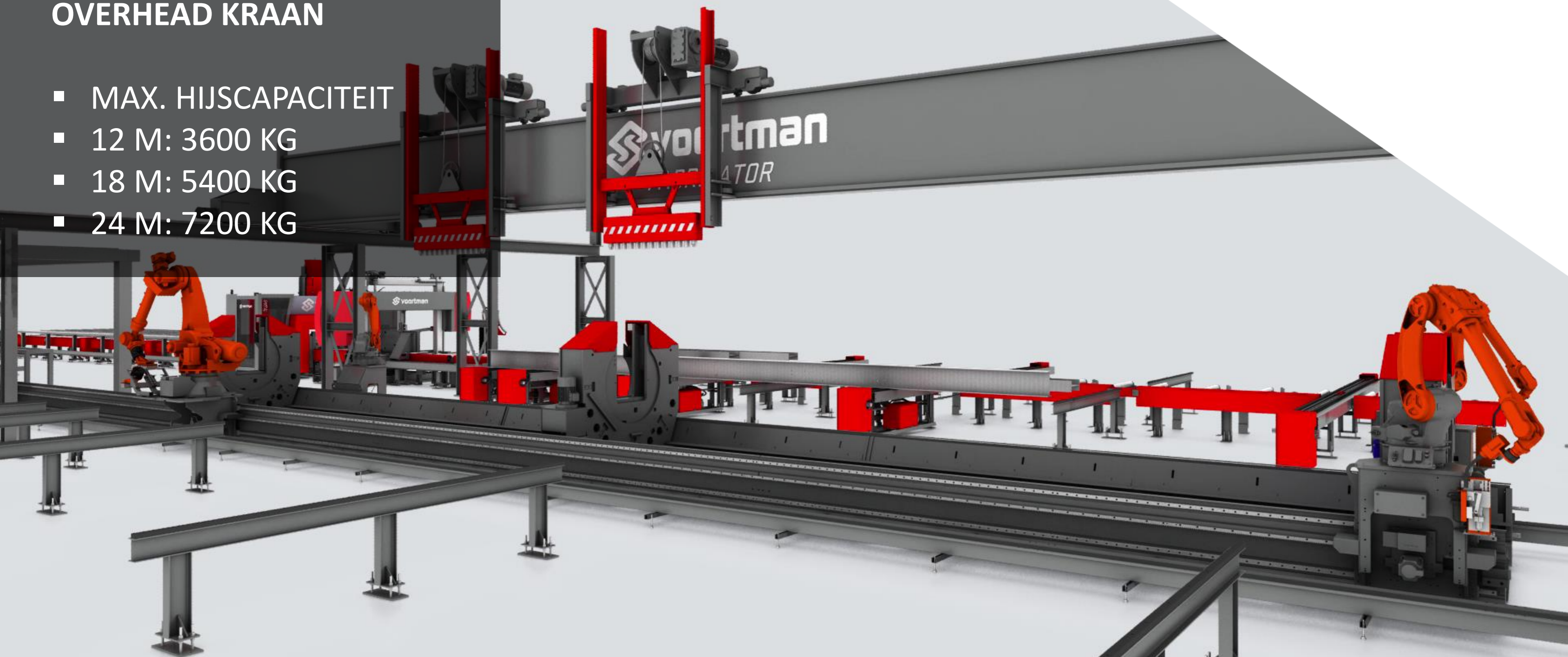
THE FABRICATOR

- OVERHEAD KRAAN VOOR PROFIEL TRANSPORT
- SHUTTLE MET MAGNETEN OM DE PLATEN AAN TE LEVEREN
- 3 LASROBOTS EN 1 HANDLING ROBOT
- PROFIEL ROTATORS



OVERHEAD KRAAN

- MAX. HIJSCAPACITEIT
- 12 M: 3600 KG
- 18 M: 5400 KG
- 24 M: 7200 KG



THE FABRICATOR

PROFIEL ROTATORS

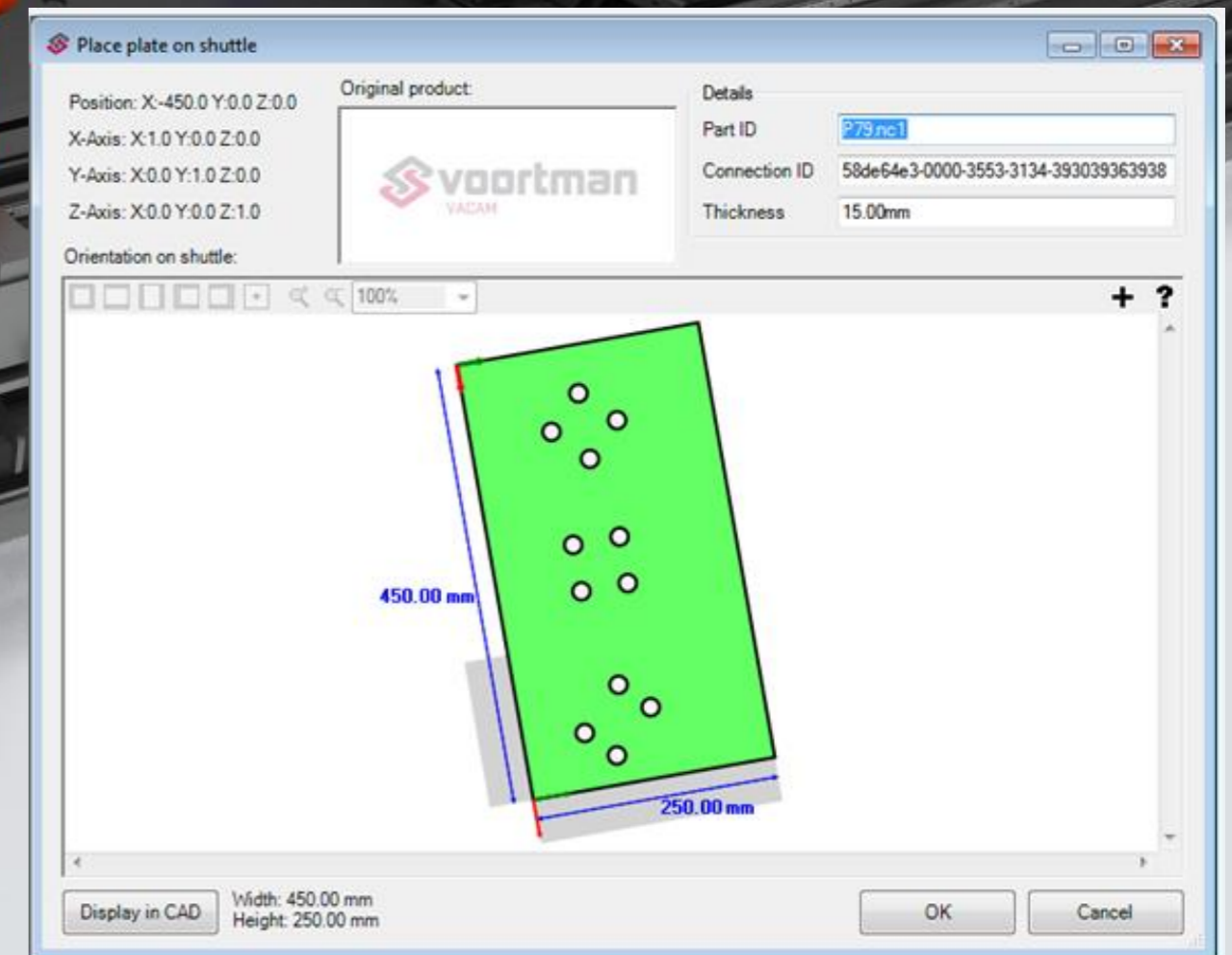
- 270° ROTEERBAAR
- MAX PROFIEL AFMETING: 600 X 410 MM
- KLEMKRACHT 100 KN PER ROTATOR
- 2, 3 OR 4 ROTATORS AFHANKELIJK VAN DE PROFIELLENGTE
- POSITIONEERSNELHEID 25 M/MIN

HANDLING- EN LASROBOTS

- VIER ROBOTS
 - 1 HANDLINGROBOT
 - 3 LASROBOTS
- POSITIONEERSNELHEID 90 M/MIN
- GEÏNTEGREERD AUTOMATISCH MAG LASPROCES
- AUTOMATISCHE KALIBRATIE EN REINIGING VAN DE NOZZLES

MATERIAAL SHUTTLE

POSITIONEERSNELHEID: 120 M/MIN
MAX PLAATAFMETING: 600X500X30 MM
MIN. PLAATAFMETING: 100X50X10 MM



INMETEN DOOR TOUCH SENSING
MET CUP EN DRAAD

voortman
STEEL GROUP

INMETEN WERKELIJKE PROFIELMATEN

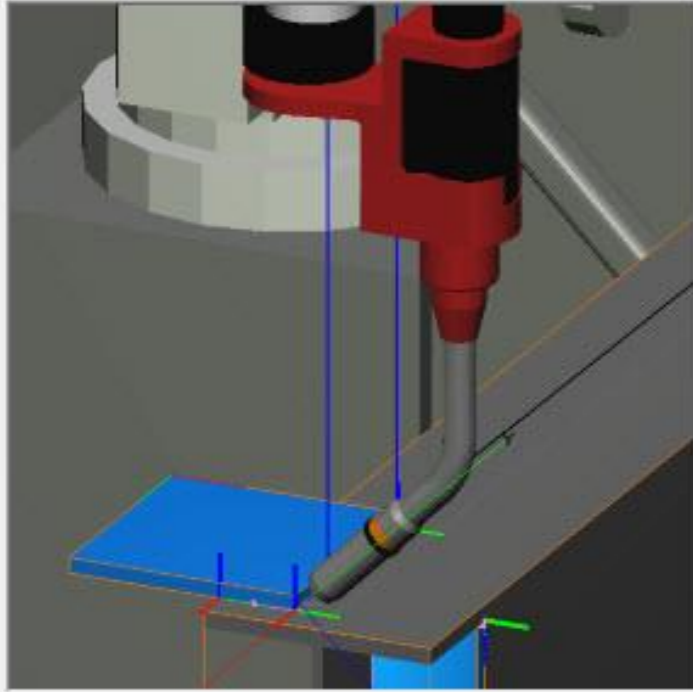


MAATAFWIJKINGEN

Weld phase settings

Profile: I-Beam Size: 3 Add layer Add weld definition
 Type: Fillet Layer: Base weld Remove layer Remove weld definitio

Default weld **Default start** Default end Edge end Edge start Primed weld

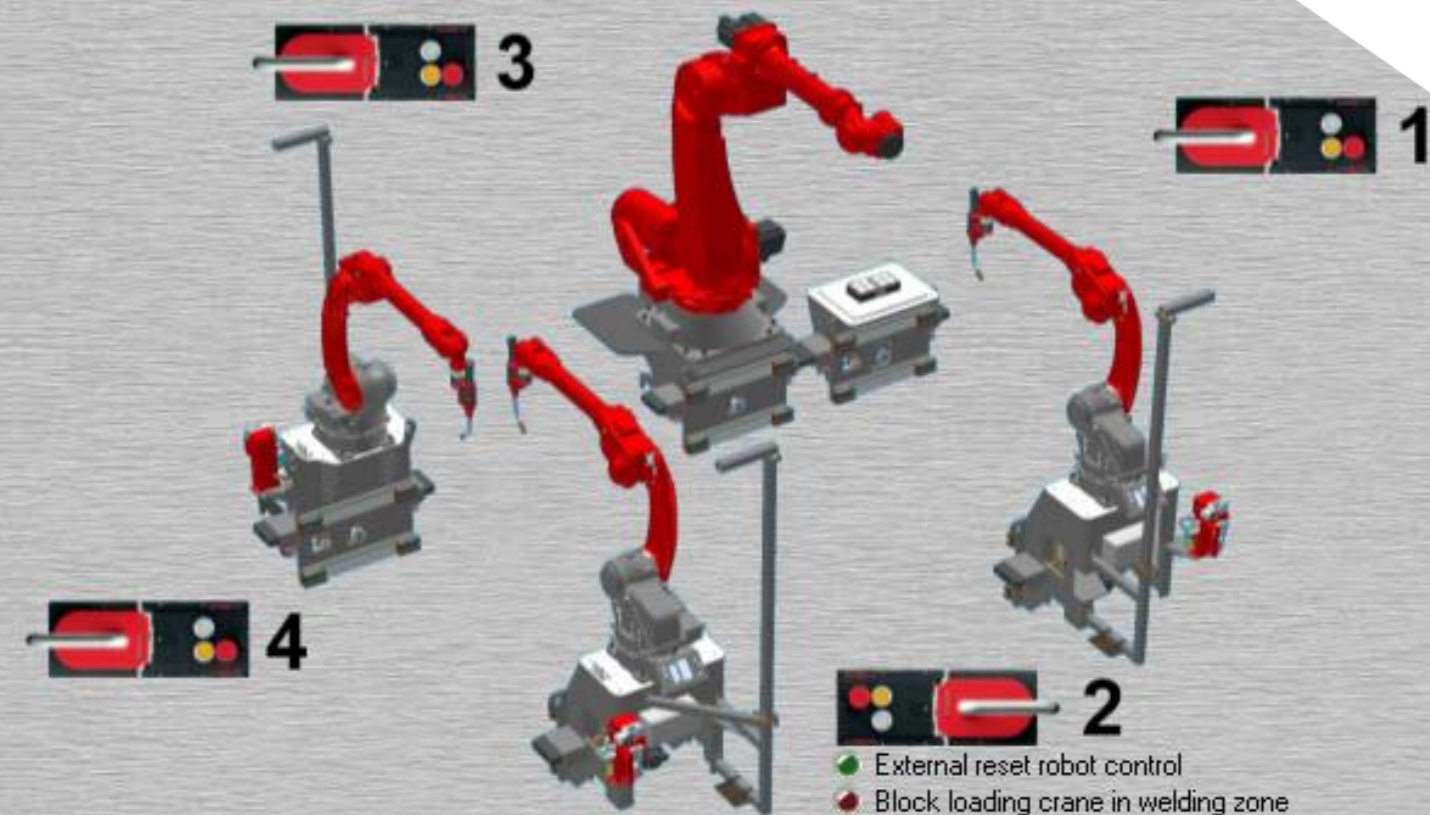


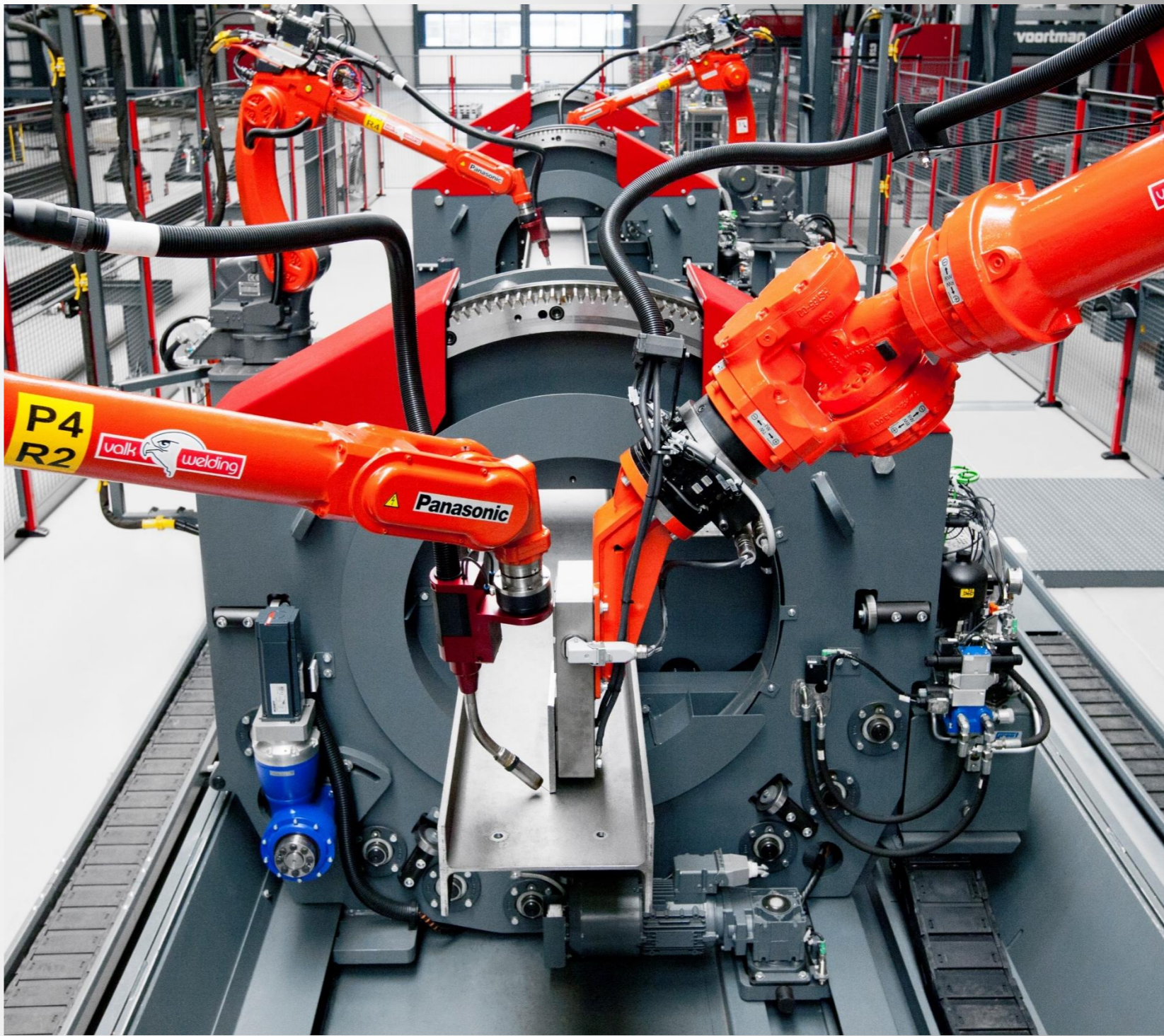
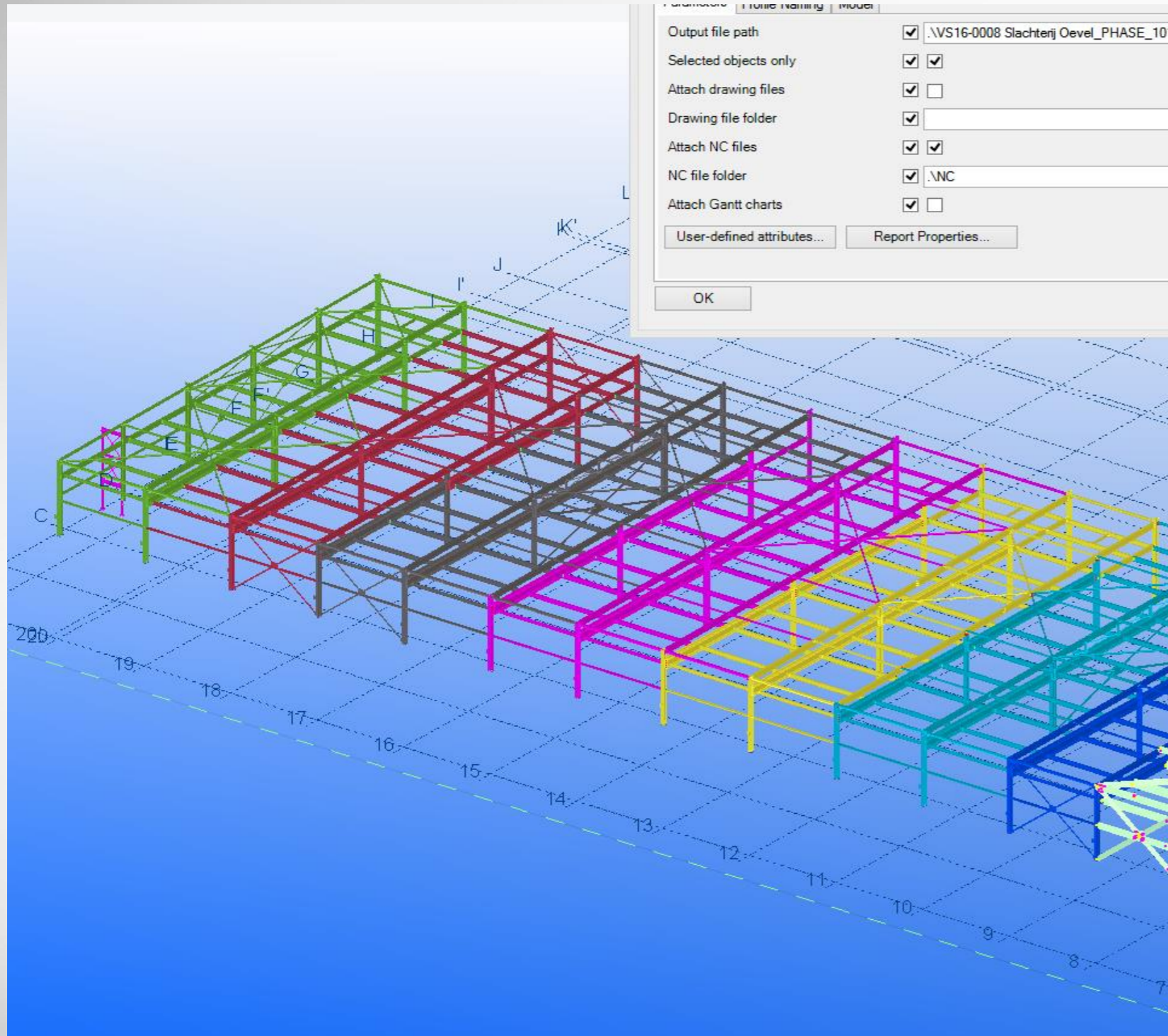
Start weld phase

Settings

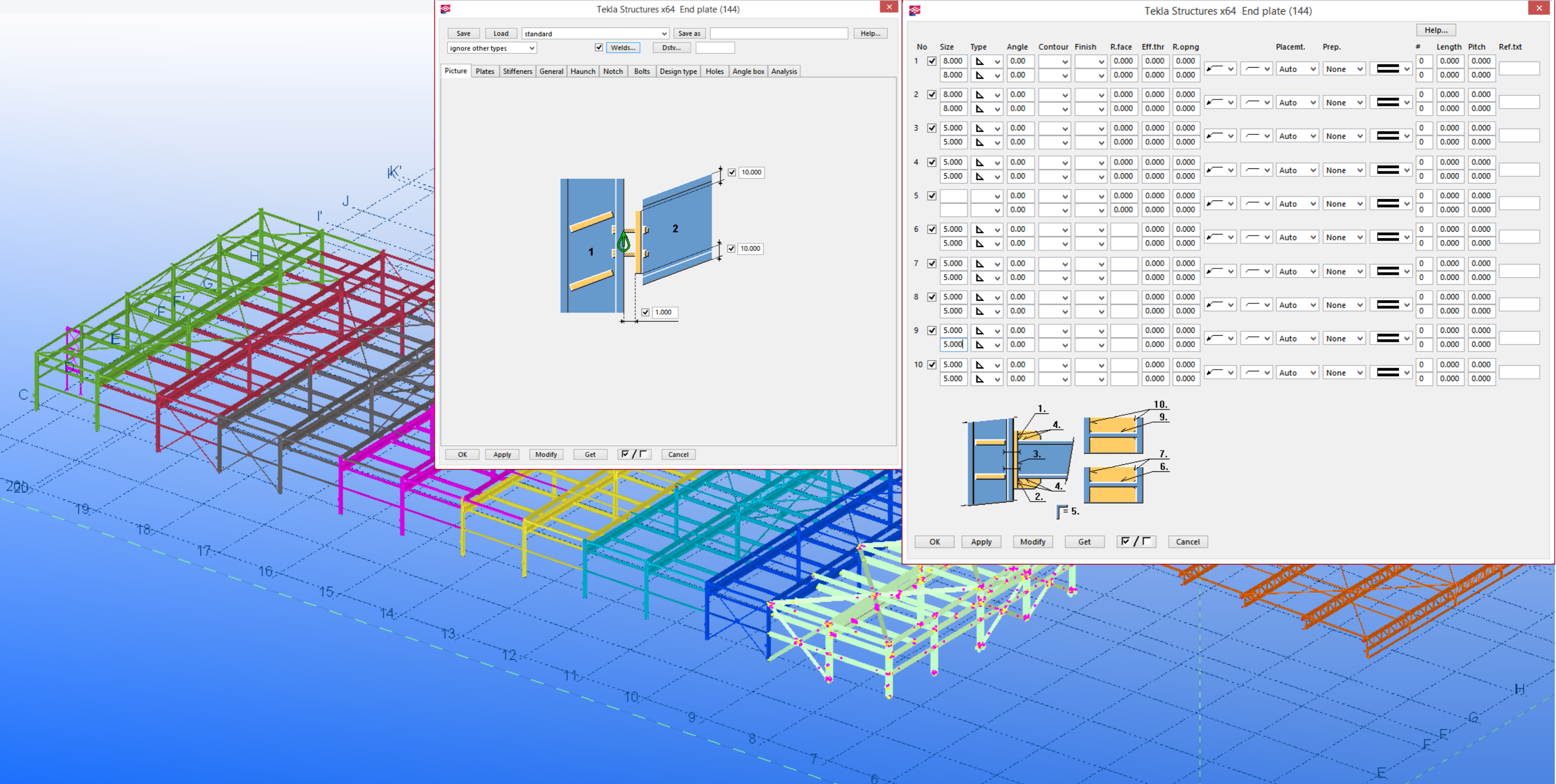
General		Weaving <input type="checkbox"/>	
Amperage	<input type="text" value="100.0"/> A	Frequency	<input type="text" value="0.0"/> Hz
Voltage	<input type="text" value="15.0"/> V	Horizontal distance	<input type="text" value="0.00"/> mm
Speed	<input type="text" value="500.0"/> mm/min	Vertical distance	<input type="text" value="0.00"/> mm
Advanced start		Slope	
Start type	<input type="text" value="InwardsStart"/>	Type	<input type="text" value="Distance"/>
Distance	<input type="text" value="5.00"/> mm	Distance	<input type="text" value="10.00"/> mm
Height	<input type="text" value="5.00"/> mm		
Speed	<input type="text" value="300.00"/> %		

Save factory defaults Load factory defaults Import Export Save Cancel





VAN 3D CAD TOT FABRICATOR



CREËREN VAN VERBINDINGEN IN DE 3D CAD SOFTWARE



BIMReviewExportPlugin

Save Load Save as Help...

Parameters Profile Naming Model

Output file path .\VS16-0008 Slachterij Oevel_PHASE_101.bswx

Selected objects only

Attach drawing files

Drawing file folder

Attach NC files

NC file folder .\NC

Attach Gantt charts

User-defined attributes... Report Properties...

OK Cancel

Phase Manager

Filter Number * Name * Filter

C...	Number	Name	Comment
@.	1	Fase 1	
	2	Staal Koelcel	
	3	MPS Koelcel	
	4	Luifel	
	5	draadeinden THV	
	6	frame condensor	
	7	Portaal hoofdtrap	FP-PRIMER
	10	Fase 10 Wvb-strippen	
	11	Fase 11 Wvb-platen	
	12	Fase 12 Willems-ankers	
	98	** 40mm ERTHALON	
	99	** Ankers+Stelmallen	
	100	** Draadeinden hal+luifel	THV
	101	vracht 1 koelcel	THV
	102	vracht 2 koelcel	THV
	103	vracht 3 koelcel	THV
	104	vracht 4 koelcel	THV
	105	vracht 5 koelcel	THV
	106	vracht 6 koelcel	THV
	107	vracht 7 koelcel	THV
	108	vracht 8 koelcel	THV
	111	Luifel	THV

Phase

Set current

Add

Delete

Lock objects

Unlock objects

Select

Phases by objects

Objects by phases

Objects

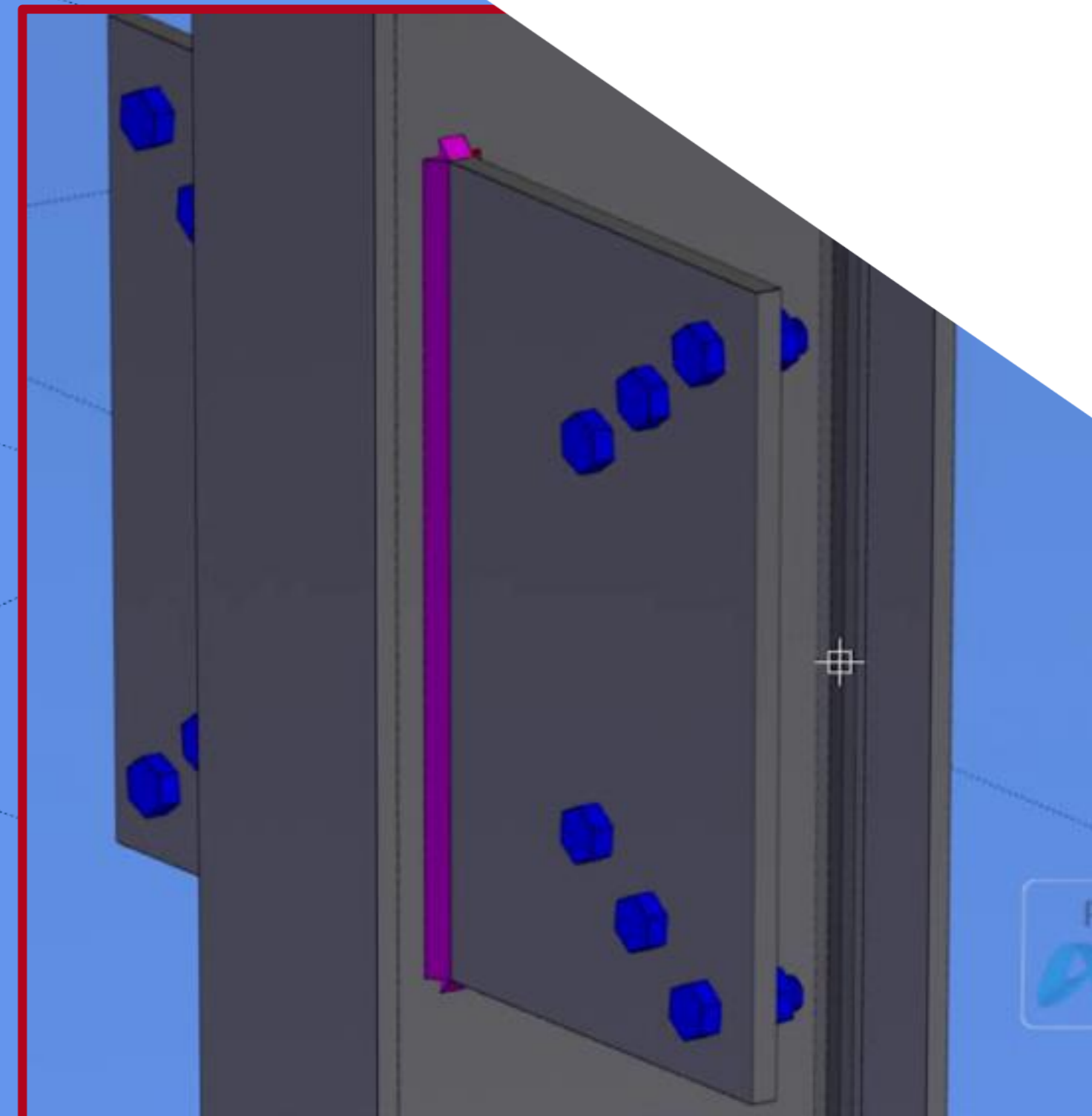
Modify phase

OK

EXPORT VAN HET 3D MODEL VIA DE PLUGIN NAAR BIMREVIEW

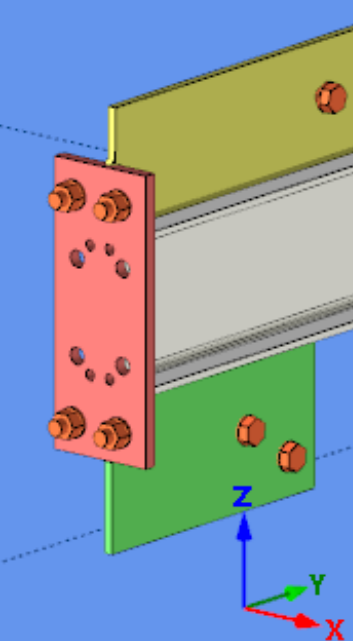
3D DETAILING SOFTWARE

TIJDENS HET IMPORTEREN VAN HET
3D MODEL IN BIMREVIEW WORDT DE
LASINFORMATIE GEANALYSEERD



BIMREVIEW

- CONTROLEREN VAN LASINFORMATIE
- CORRIGEREN VAN FOUTIEVE LASINFORMATIE
- AANVULLEN VAN ONTBREKENDE LASINFORMATIE
- BEPALEN VAN LASVOLGORDE



Welding checks ? [X]

- Missing welds between secondary parts
- Incomplete connections
- Root opening too large
Maximum gap
- Overlapping welds
- Weld clashes with another part
- Flange and web weld sizes

OK Cancel

Automatic weld fixes ? [X]

- Clear warnings
- Insert missing welds between secondary parts
- No part contact
- Remove overlapping welds
- Merge multiple welds
- Fillet on edge weld
- Trim weld that clashes with part
- Finish incomplete welds
- Swap flange and web sizes

OK Cancel

Part Order

Accepted [Down Arrow]

Part Order

- Pr143
 - Part Group A
 - P43
 - P92
 - P153
 - Part Group B
 - P45
 - P94
 - P153

Dependencies

Weld

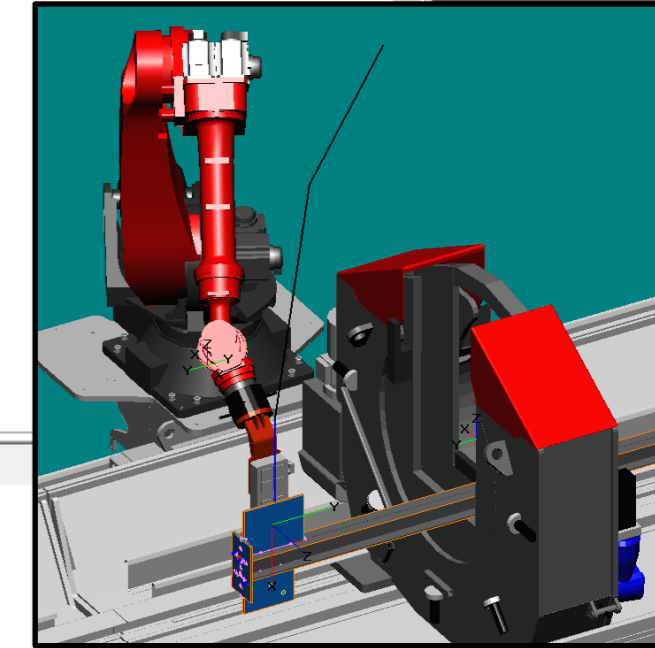
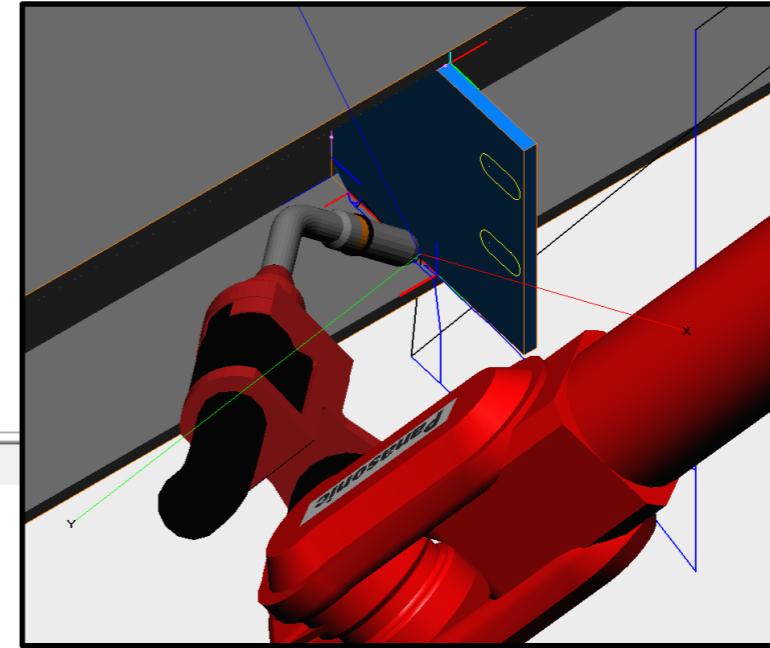
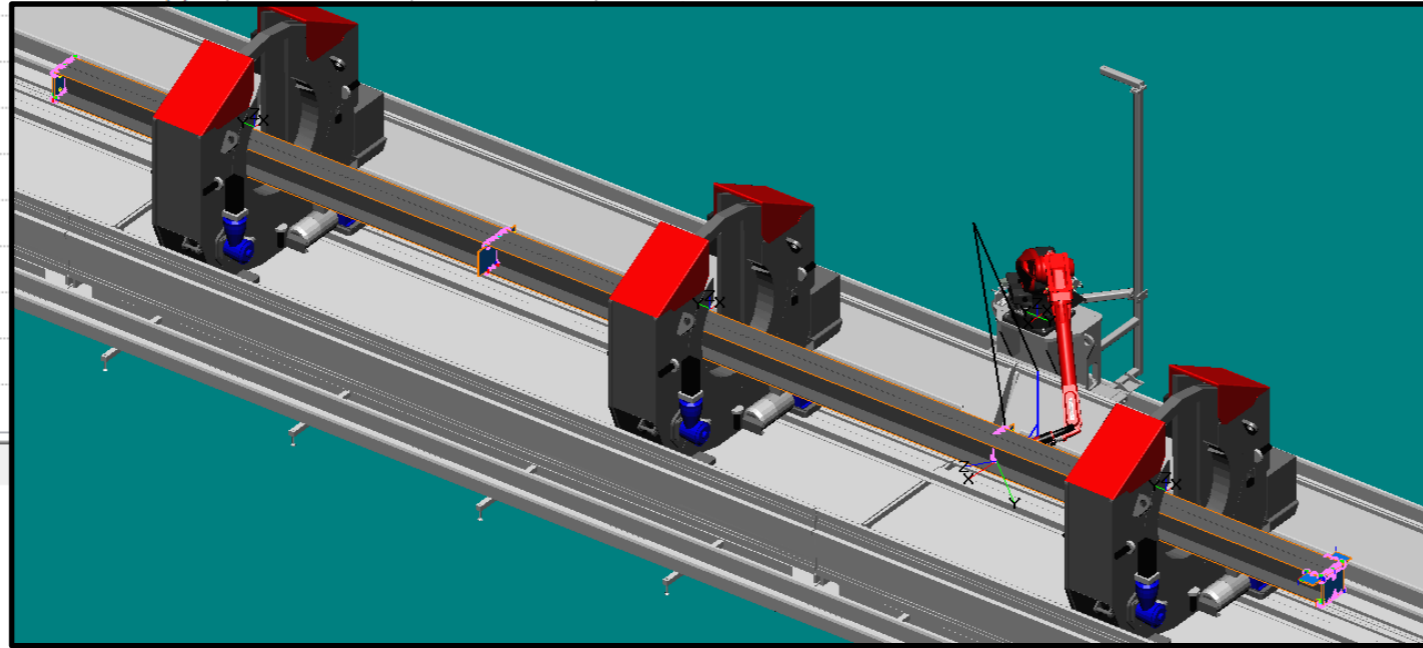
- Pr143 to P153
- Pr143 to P153
- Pr143 to P94
- Pr143 to P92
- Pr143 to P45
- Pr143 to P43

Insert Remove

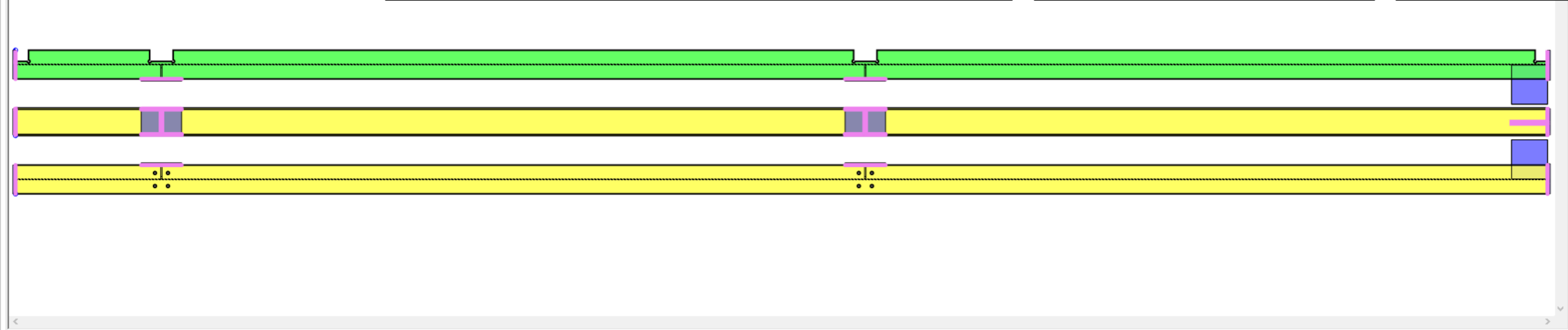
Weld Part Order

WELD DATA VALIDATIE

67	Derby	0	K12	9984
68	Derby	0	K13	9984
69	Derby	0	K14	10169
70	Derby	0	K17	9984
71	Derby	0	K18	10169
72	Derby	0	K19	10169
73	Derby	0	K20	10169
74	Derby	0	K21	9984
75	Derby	0	K22	10164



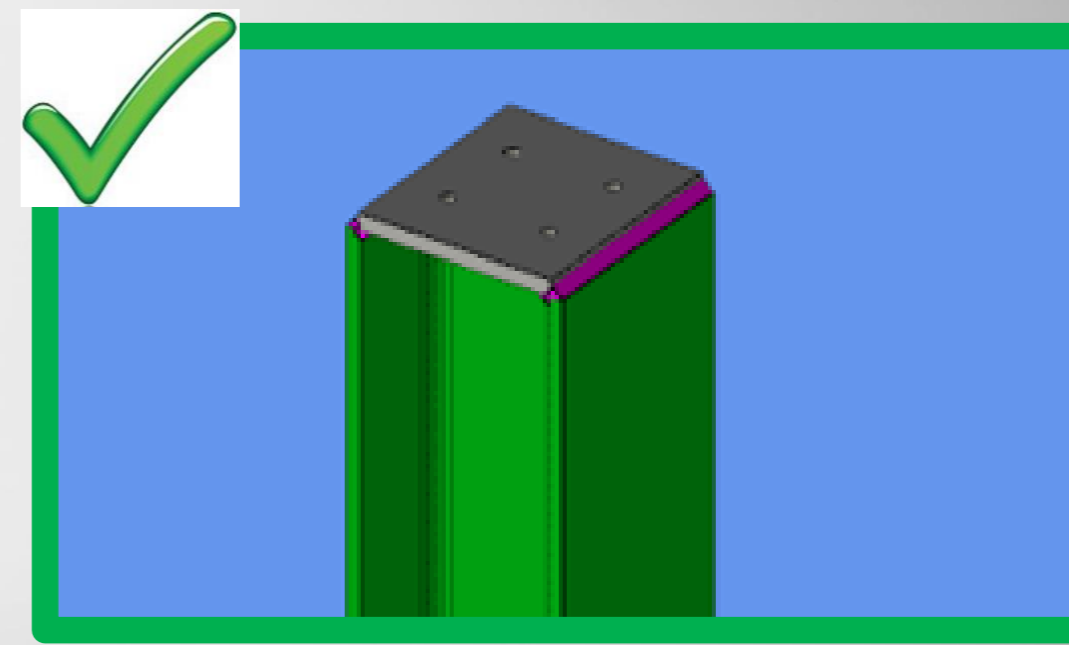
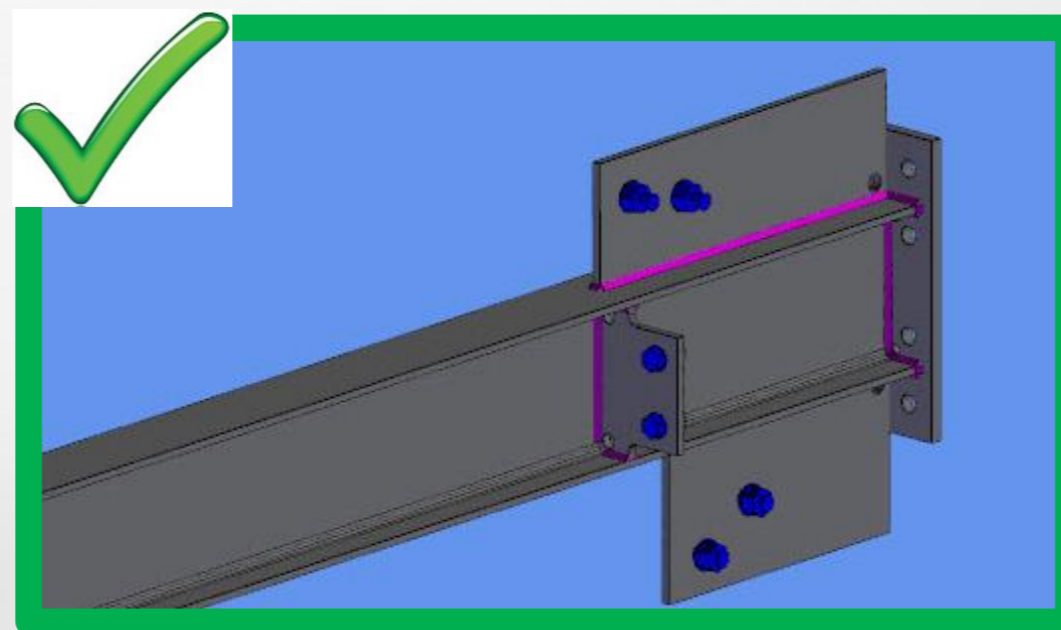
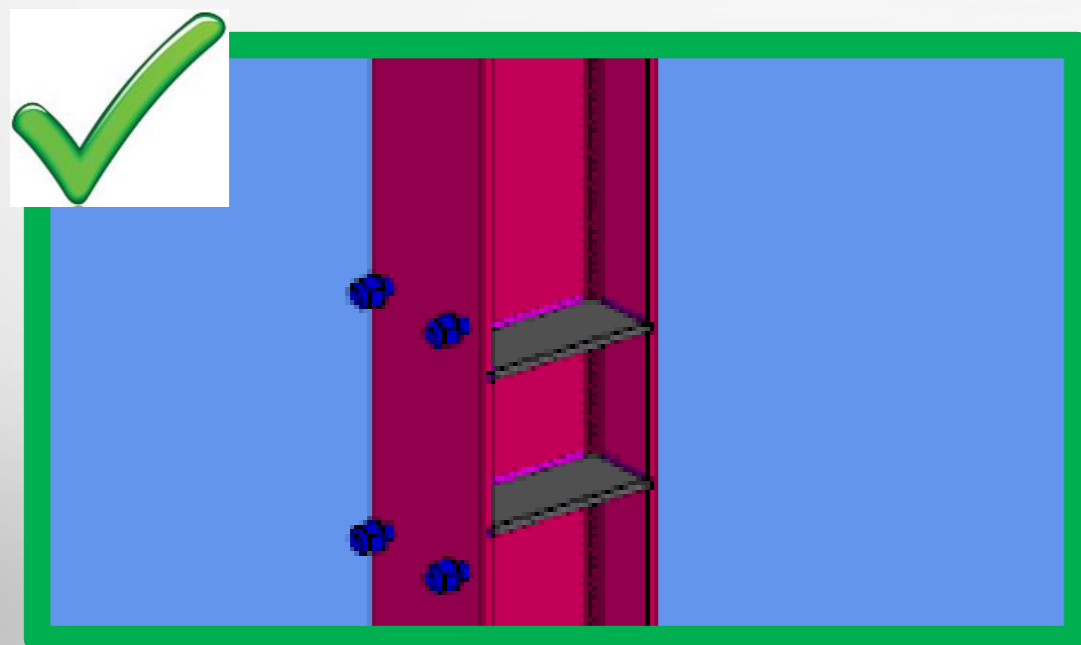
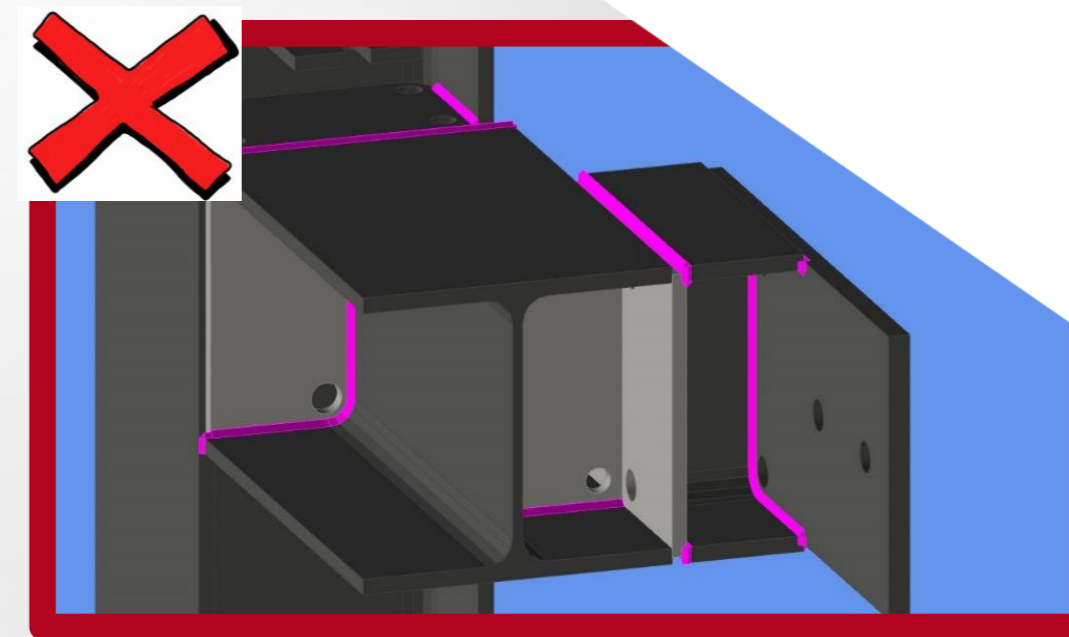
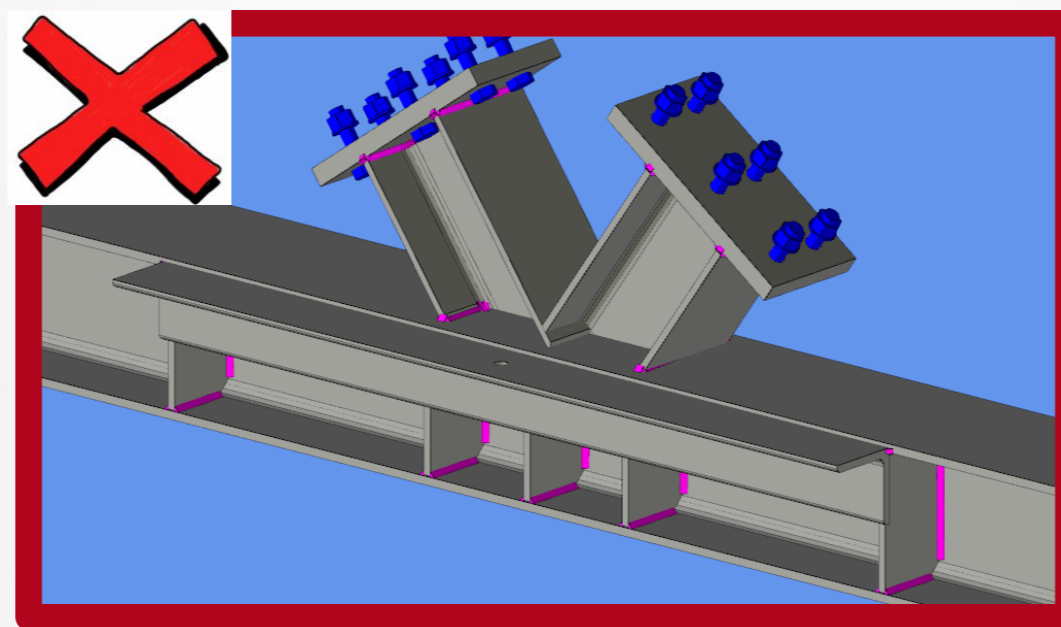
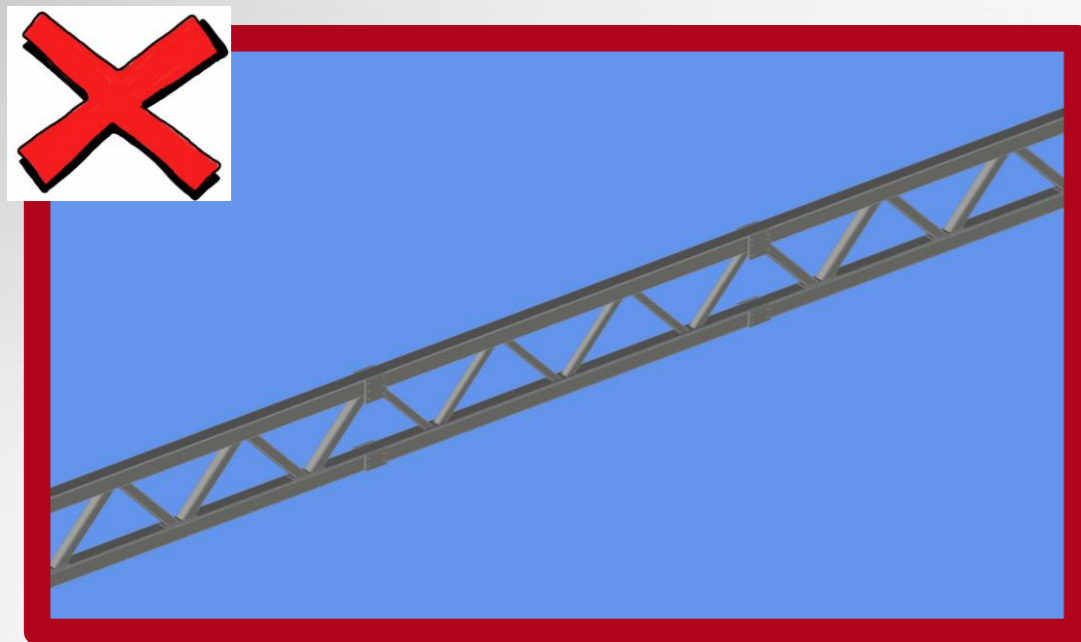
UI control bar with icons for view, zoom, and a dropdown menu showing '100%'.



Vertical sidebar menu with icons and labels: Products, Assemblies, Buffers, Cycle, Manual, Status.

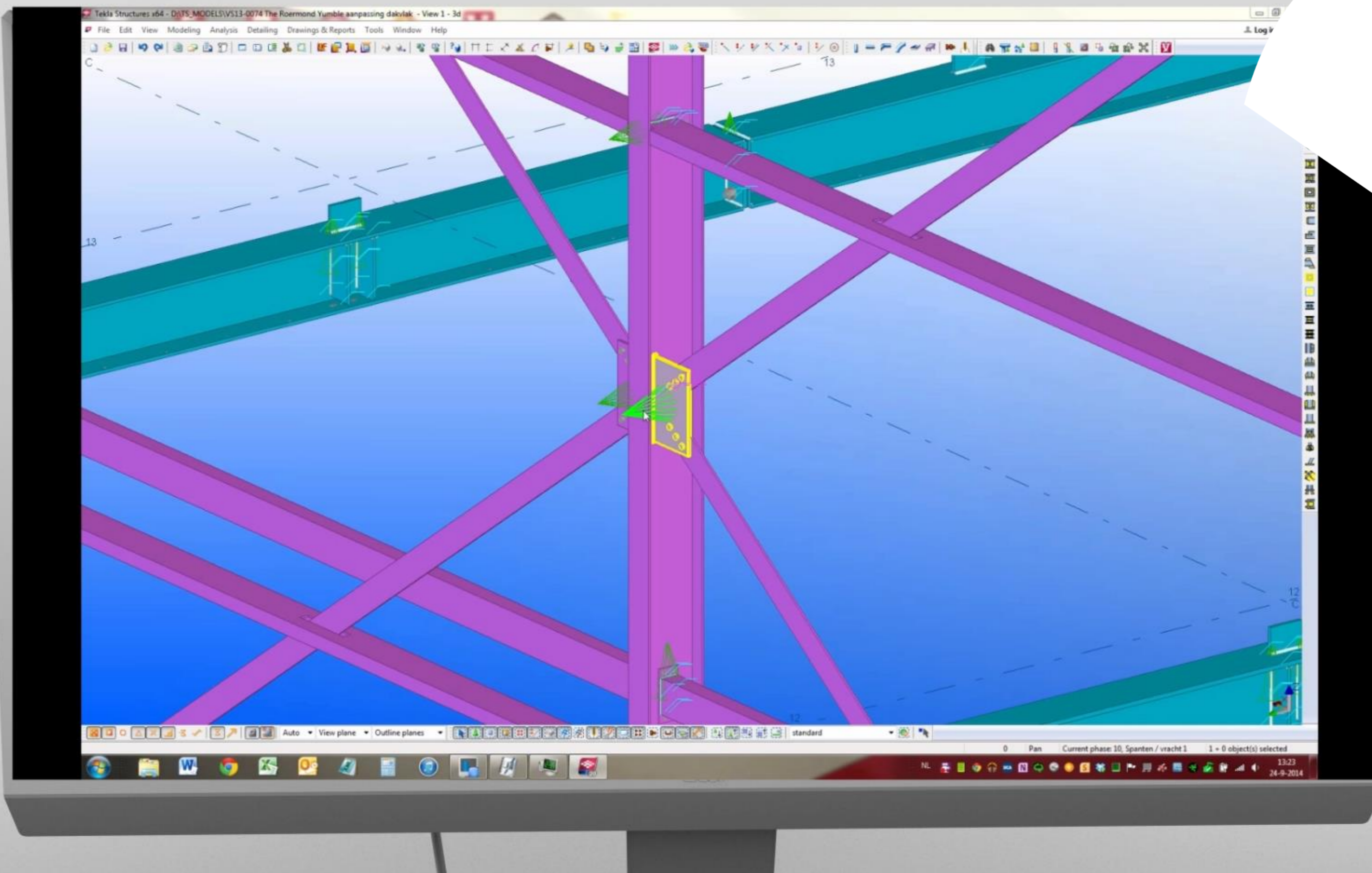
Status area with text: 'No warnings', 'No stopflags', and an 'Events' section with a 'Clear' button.

VALIDATIE OP MAAKBAARHEID



MAAKBAARHEID

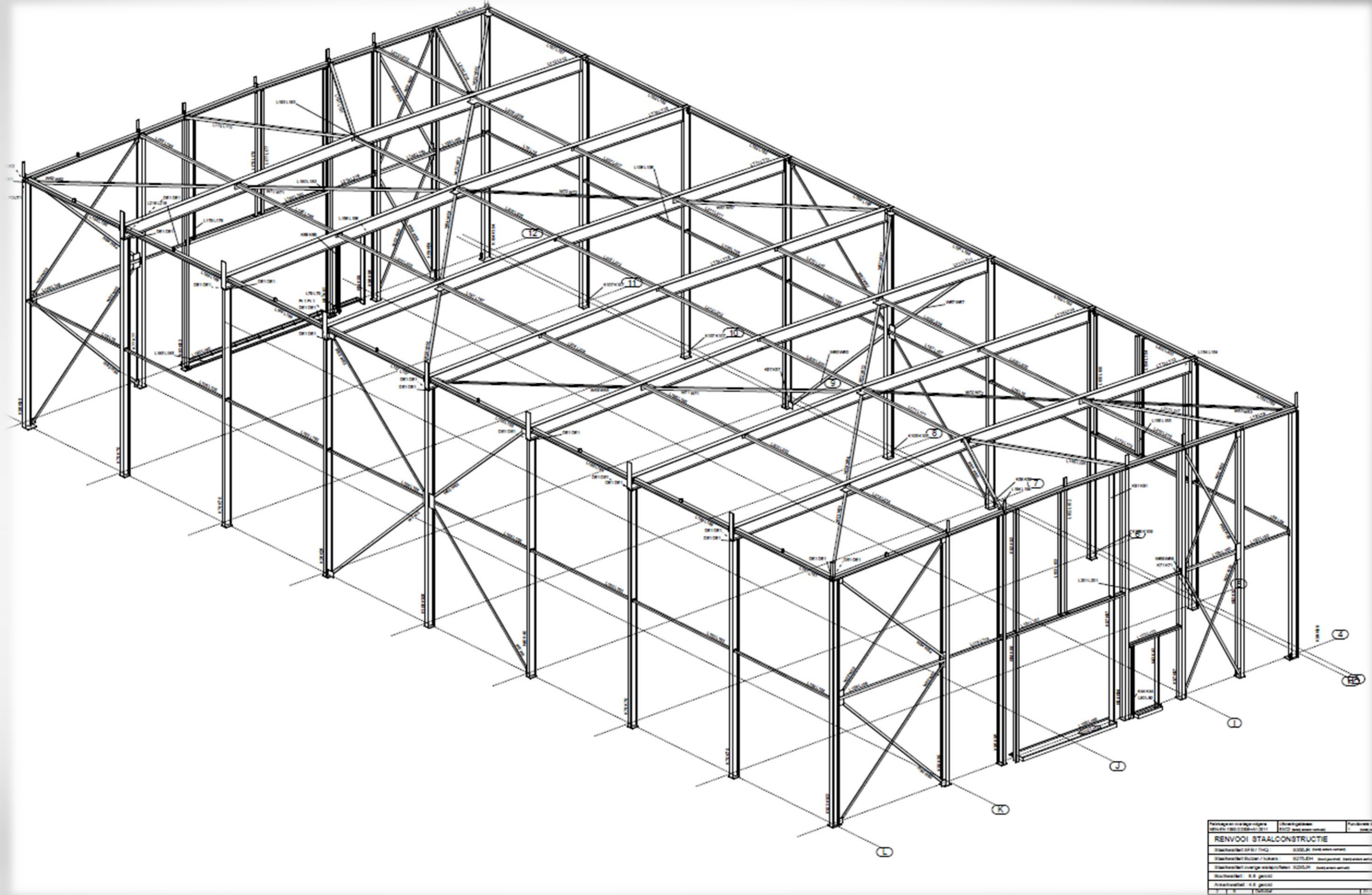
KOSTEN EN MAAKBAARHEID
THE FABRICATOR
VAN 3D CAD TOT FABRICATOR
BESCHIKBAARHEID



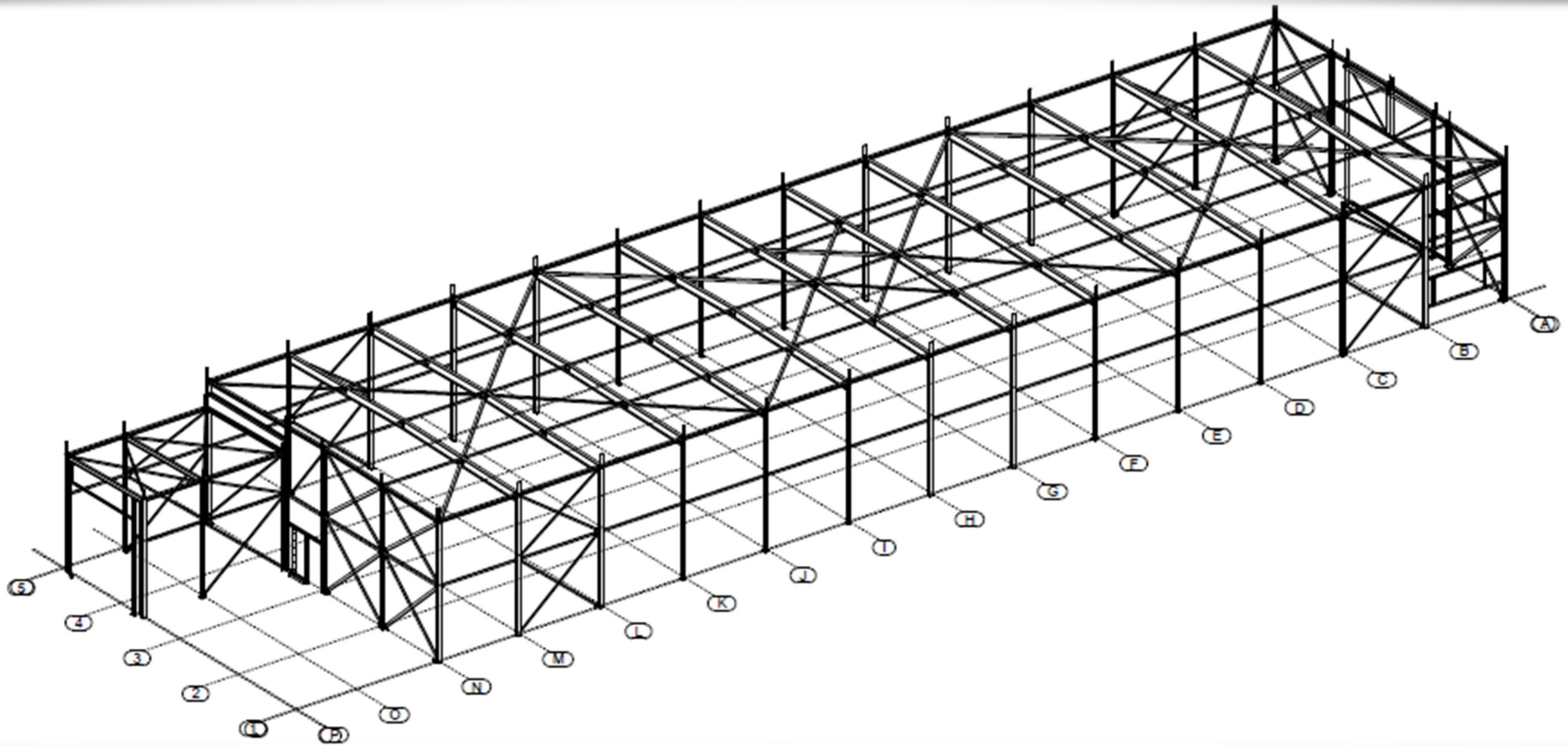
VAN 3D CAD TOT FABRICATOR

TYPE CONSTRUCTIES: HALLENBOUW

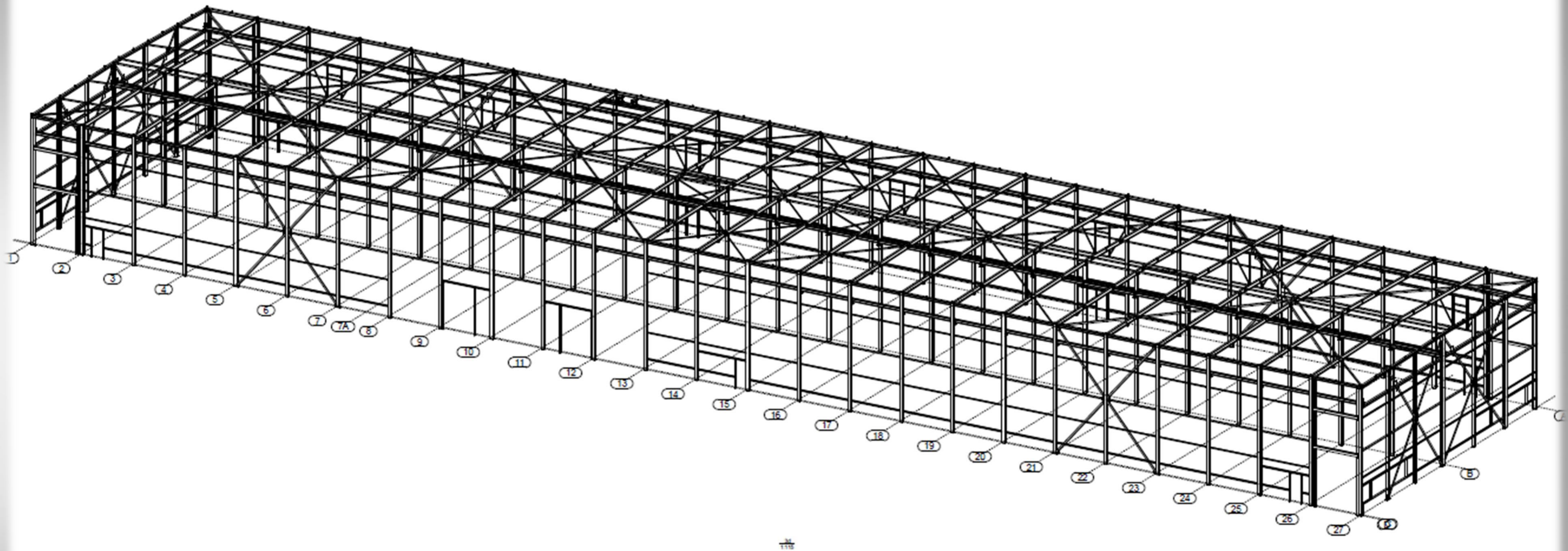
ANALYSE VAN EEN AANTAL PROJECTEN



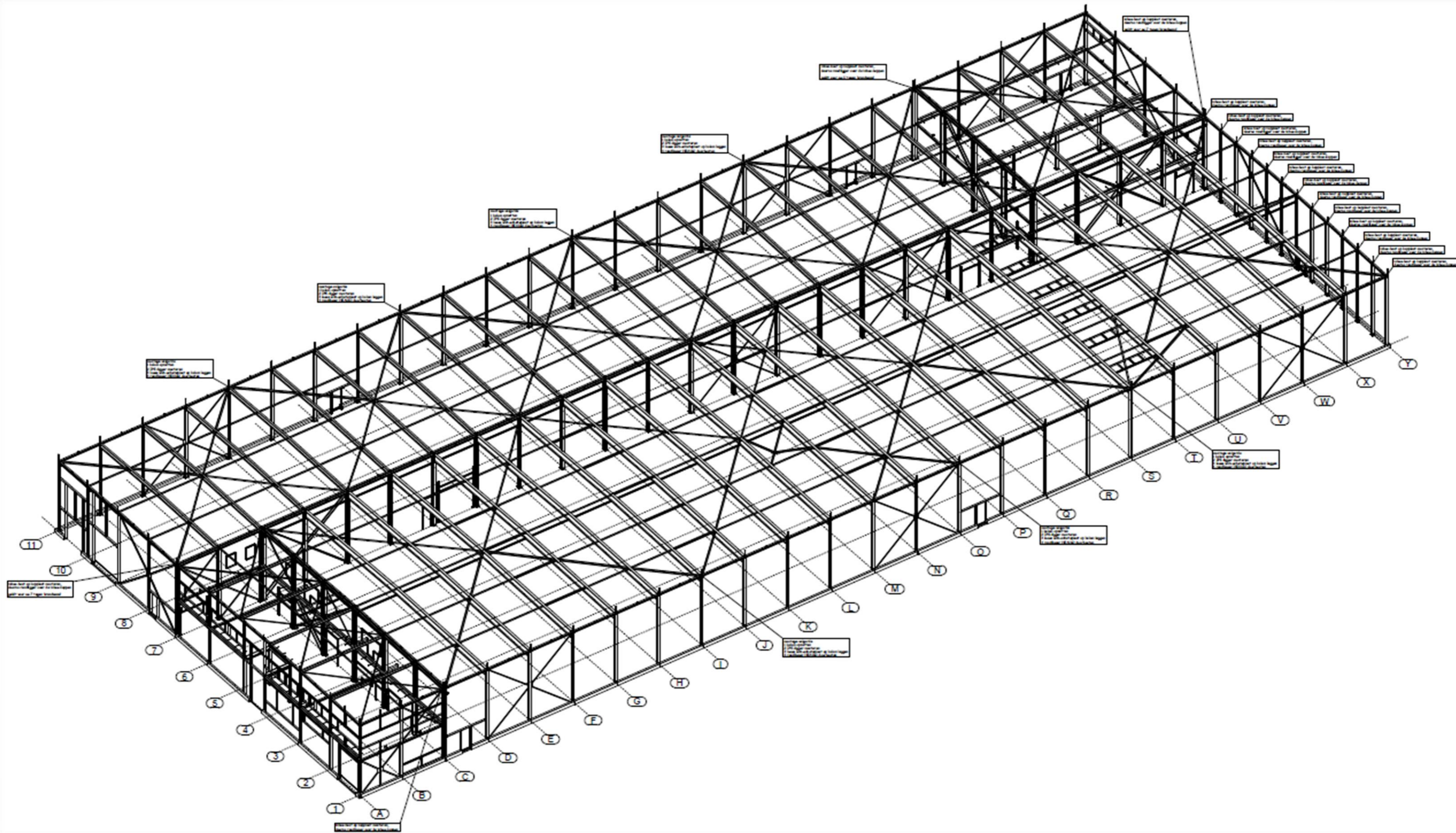
ANALYSE VAN EEN AANTAL PROJECTEN



ANALYSE VAN EEN AANTAL PROJECTEN



ANALYSE VAN EEN AANTAL PROJECTEN



ANALYSE VAN EEN AANTAL PROJECTEN

KOSTEN EN MAAKBAARHEID
THE FABRICATOR
VAN 3D CAD TOT FABRICATOR
BESCHIKBAARHEID

